

Light steel door LSD



*Window frames, window materials, louvers and handles are optional.

A wide range of variations

- Standard type
- Airtight type



Uniflow's LSD is light and tough!
It is suitable for a great variety of applications.

Feature ①

Possible to have SWING and SLIDING options

Flexibility in order placement, as both SWING and SLIDING DOOR can be fabricated concurrently. options

Feature ②

Flexibility in specification changes

Specification changes of various options, such as surface materials to meet different applications and work environments, can be catered for.

Feature ③

Successful implementations with varied applications

Successful implementations of this simple door structure, as a partition, in supermarkets, offices, hospitals, factories and etc., have catered for varied openings and applications.

Specification

Door	Door thickness	39mm
	Core of the door	Paper core
	Surface material	Colored steel plate 0.6mm Aluminum 0.8mm SUS304(2B) 0.8mm Bonderized steel plate 0.8mm Baked finishing 0.8mm
	Hinge	Flag hinge(SUS)
	Door closer	Parallel/Standard
Frame	Steel (Anti-rust grey color)1.6t (Baked finish and stainless steel options are also available.)	

Options

Window material/frame



Handle (Lever handle)



Louver



Pivot hinge



Stainless steel base plate

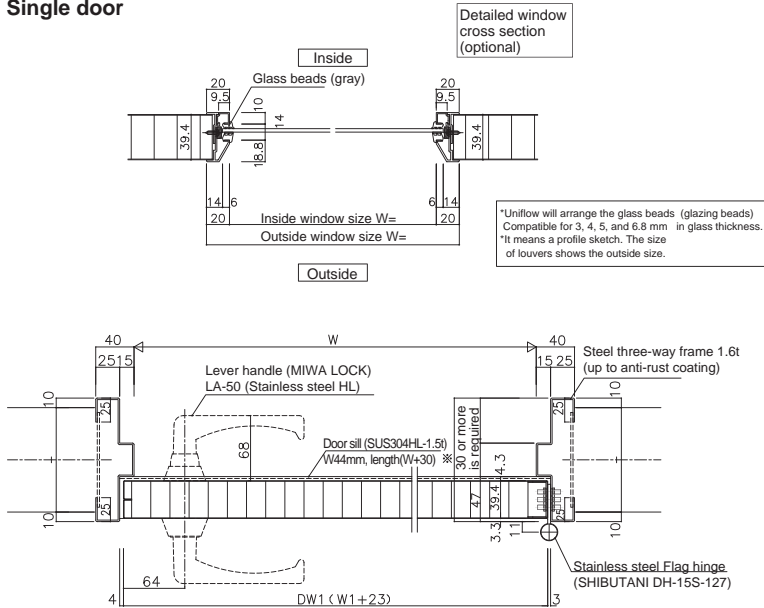


※Please consult us for other available options.

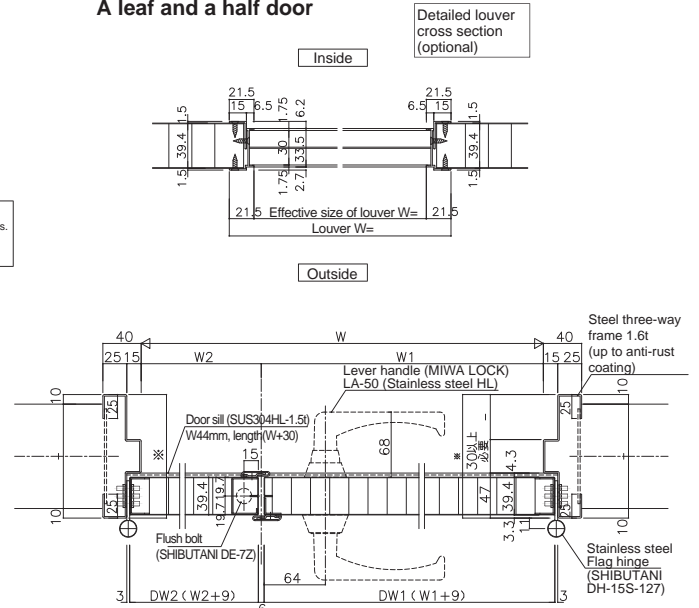
Installation (Standard type)

(right hand opening)

[Horizontal section] Single door

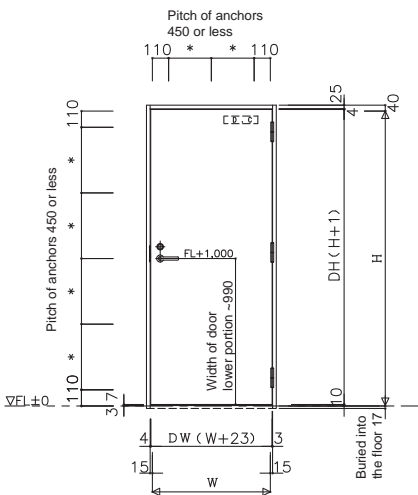


[Horizontal section] A leaf and a half door

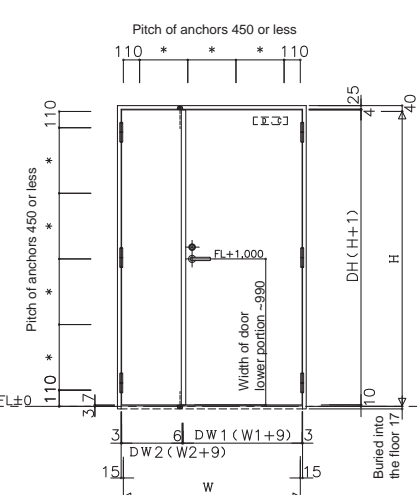


*This drawing shows a right hand opening master door. The profile sketch of either a right-handed or left-handed door is considered as true.

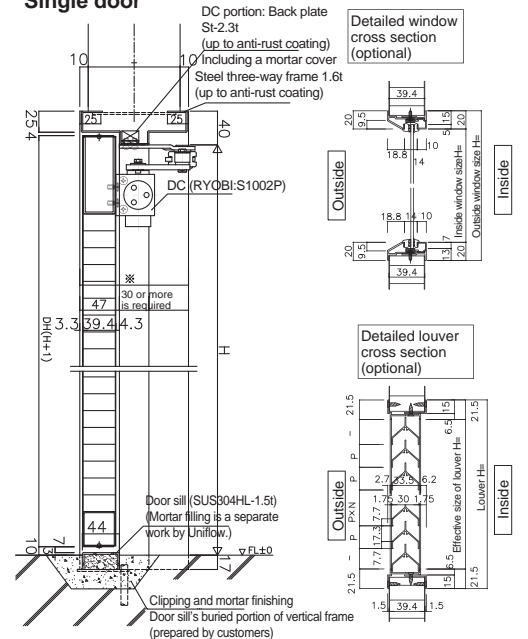
[Front elevation of basic installation] Single door



[Front elevation of basic installation] A leaf and a half door



[Cross section] Single door



Other products by UNIFLOW

- (From left to right sequence)
- SWING DOOR
 - SLIDING DOOR
 - Roll-up door 'JETTER'
 - Roll-up door 'SMOOTHER'



UNIFLOW

Uniflow International Pte. Ltd
11 Collyer Quay, #10-13 The Arcade, Singapore 049317
TEL: +65-6536-3239

URL <https://www.uniflow.co.jp/en/>