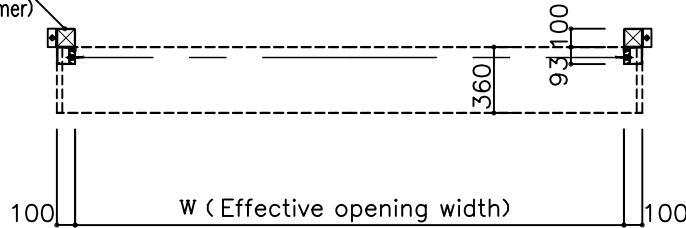


JETTER JT-2T Range of possible opening

W (Effective opening width)	1000 ~ 4500
H (Effective opening height)	1000 ~ 4500

Material type for drum box	Colored steel plate	Color: Ivory
Sheet	Polyester yarn encapsulated vinyl sheet	Color: Transparent/Insect-proof orange

Steel square pipe 100x100x2.3t
(prepared by customer)

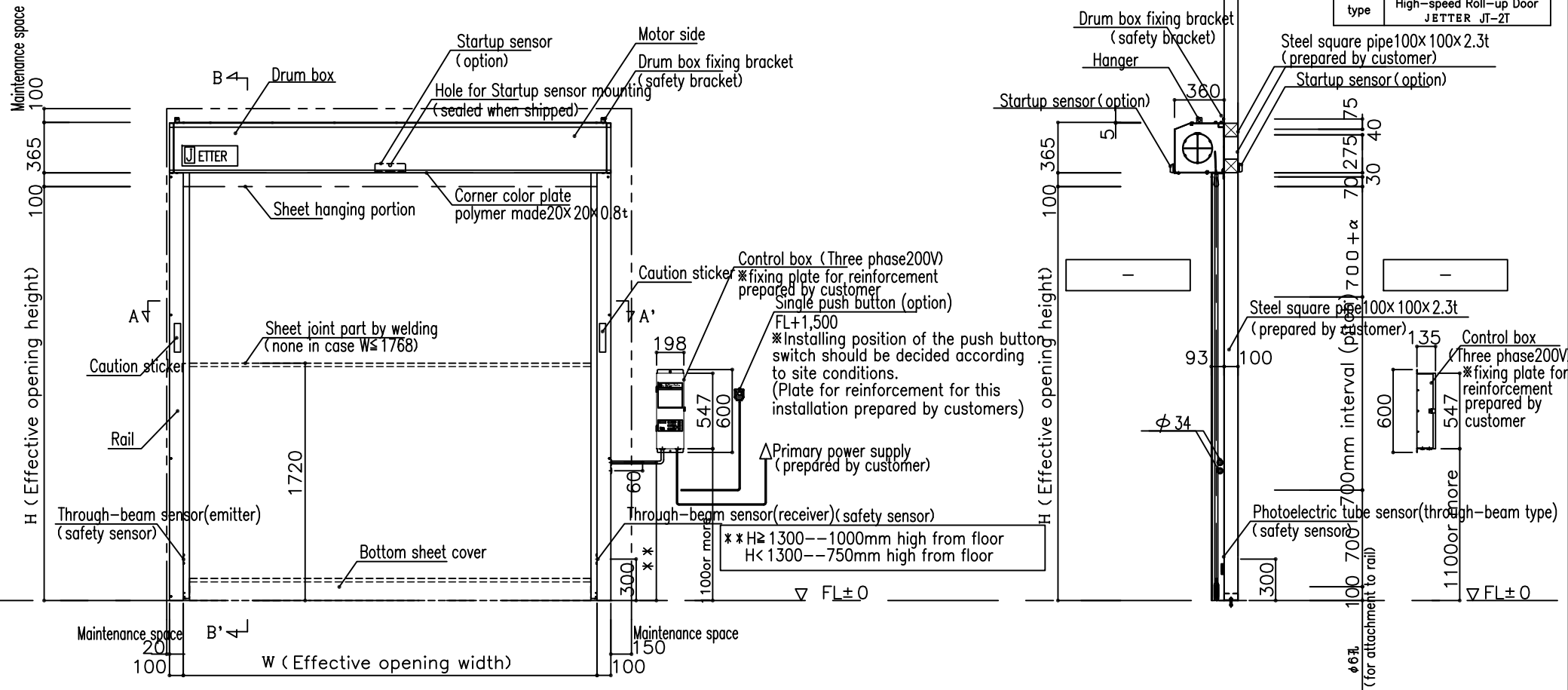


- ※ As an option, we can supply units with motor mounted on the left as well.
- ※ If window is required to make on sheet, its position is 1630mm high from floor to the upper end of window. Standard size of window: width = $W - 500\text{mm}$ x height 500mm
- ※ Position of welding joint part of sheet for standard sheet without window:
 - $1000\text{mm} \leq H \leq 4000\text{mm}$: the position is 1720mm high from floor.
 - $W \leq 1768\text{mm}$: no joint part
 - $W \geq 1769\text{mm}$: one joint part
 - $4000\text{mm} < H \leq 4500\text{mm}$: the positions are 1720mm and 3545mm high from floor.
 - $W \leq 1768\text{mm}$: no joint part
 - $W \geq 1769\text{mm}$: two joint parts

Components		Q'ty		
		Frontside	Backside	Total
Safety sensor	Photoelectric tube sensor (through-beam type)	1	-	1
Startup sensor	- (option)	-	-	-
Opening/closing switch	Operation panel switch (option)	-	-	-
	Push button switch (option)	-	-	-
	Pull switch (option)	-	-	-
Motor	Rated power 750W	-	-	-
Control box	Three phase AC200V 6A or below	1	-	1

※ Shape and size of bottom pipe for $W \leq 3000\text{mm}$ and $W > 3000\text{mm}$ differ.

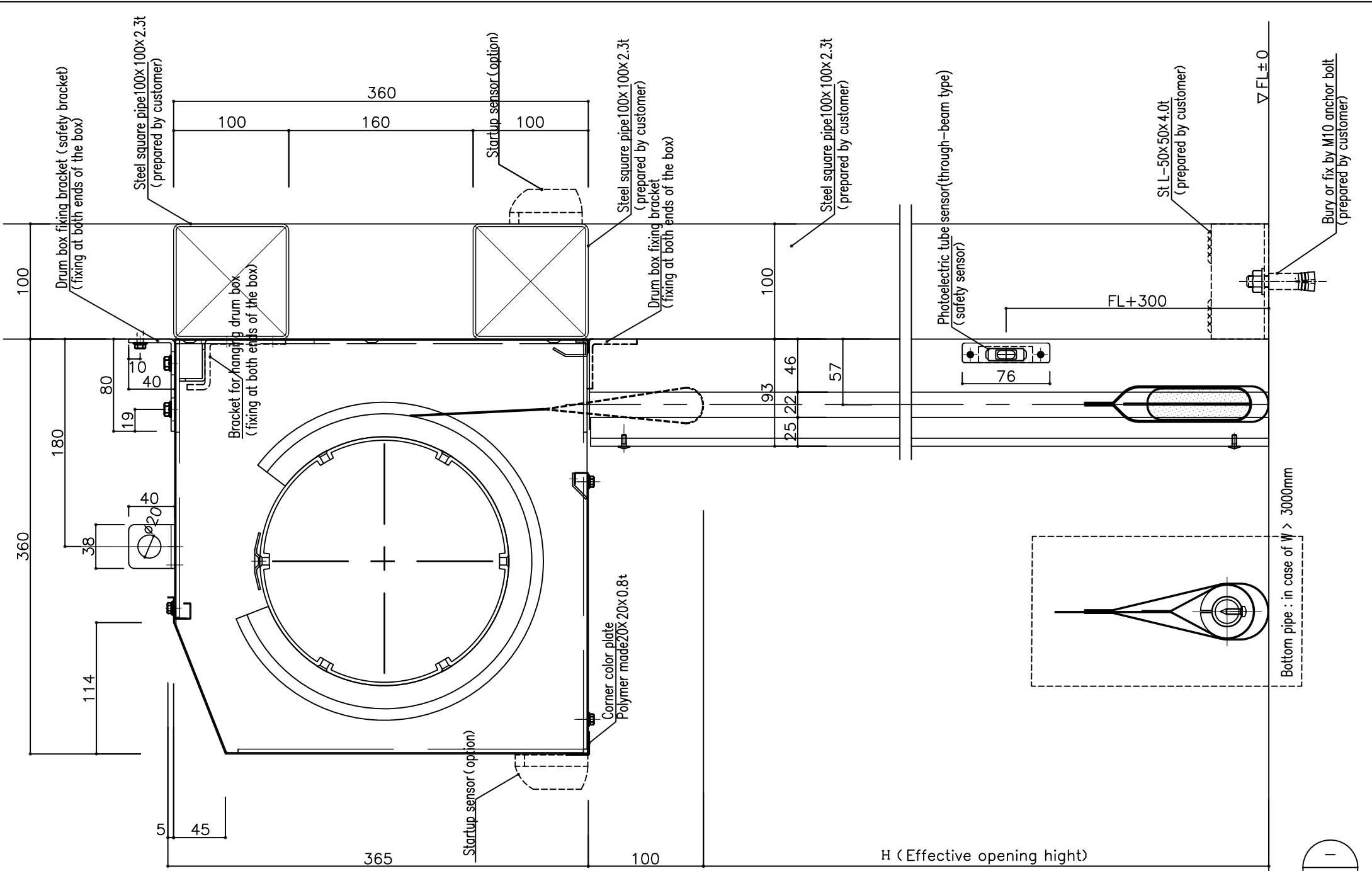
Code	Q'ty	Location of installation
⊕	-	~
type		High-speed Roll-up Door JETTER JT-2T



High-speed Roll-up Door
JETTER JT-2T
Image of basic installation



scale	-
1/30	Drawing No 01
/	Date - . - .



A-A' section ※Construction of bases for installation should be discussed at each site according to the site conditions.

•	•	•	•	•	•
•	•	•	•	•	•
•	•	•	•	•	•
•	•	•	•	•	•

High-speed Roll-up Door
JETTER JT-2T
vertical section



scale	-
1/3	Drawing No 03
/	Date - . - . -

