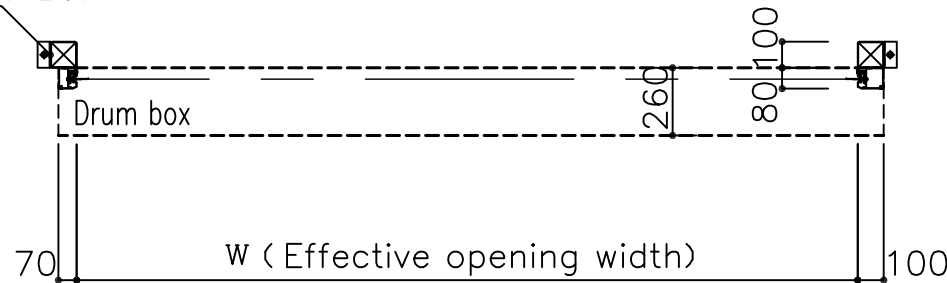


JETTER JT-1T Range of possible opening

W (Effective opening width)	900 ~ 3000
H (Effective opening height)	900 ~ 3000

Material type for Drum box	Colored steel plate	Color:Ivory
Sheet	Polyester yarn encapsled vinyl sheet	Color:Transparent /Insect-proof orange

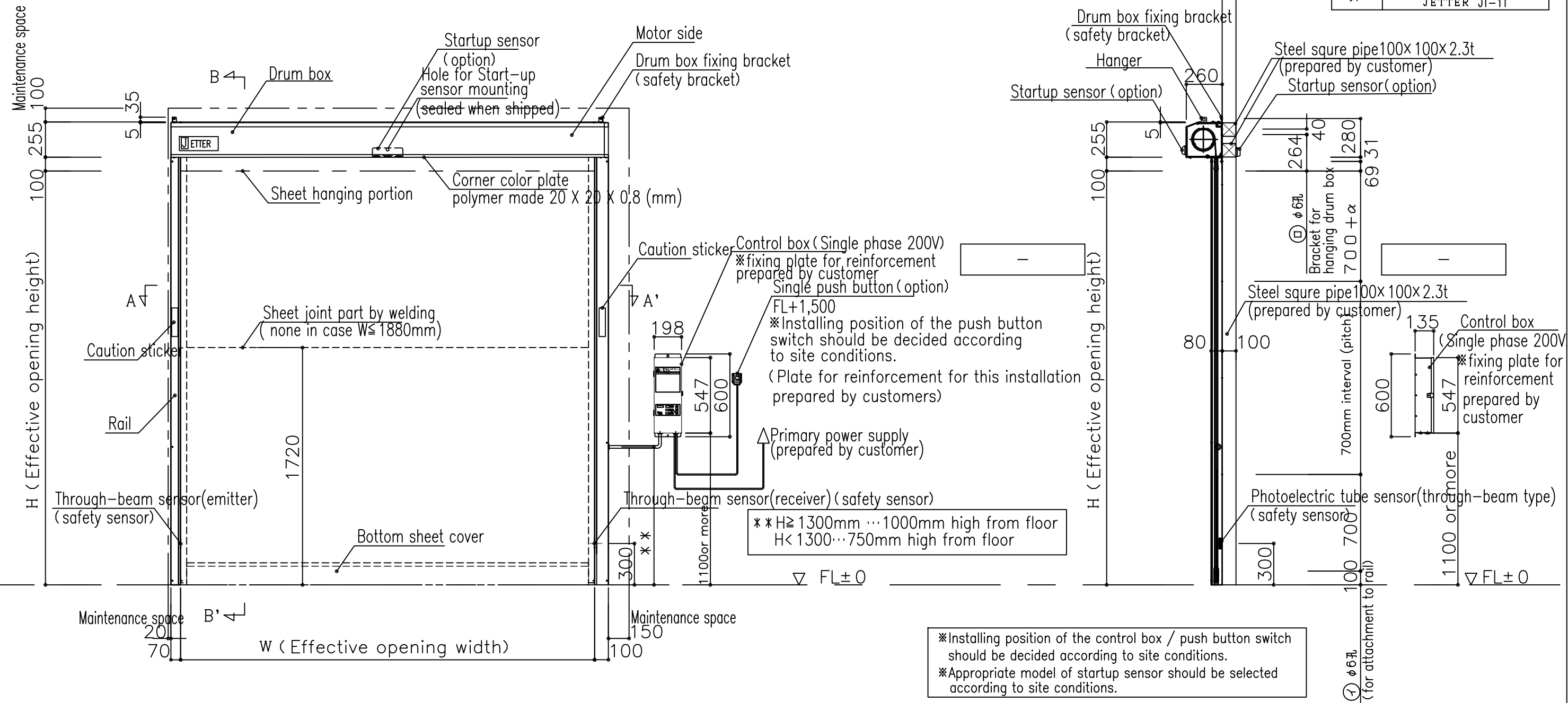
Steel square pipe 100x100x2.3t  
(prepared by customer)



\* This image is for standard spec. with the motor mounted on the right side.  
100mm wide right side and 70mm wide left side rails introduced.  
\* As an option, we can supply units with motor mounted on the left as well.  
In this case, 100mm wide left side and 70mm right side rails introduced.  
Control box shall be placed on the left of the front (rails).

Components		Q'ty		
		Front side	Back side	Total
Safety sensor	Photoelectric tube sensor (through-beam type)	-	1	1
Startup sensor	- (option)	-	-	-
Opening/closing switch	Operation panel switch (option)	-	-	-
	Push button switch (option)	-	-	-
	Pull switch (option)	-	-	-
Motor	Rated power 400W	-	-	-
Control box	Single phase AC200V · below 5A	1	-	1

Code	Quantity	Location of installation
⊖	-	~
type	High-speed Roll-up Door JETTER JT-1T	

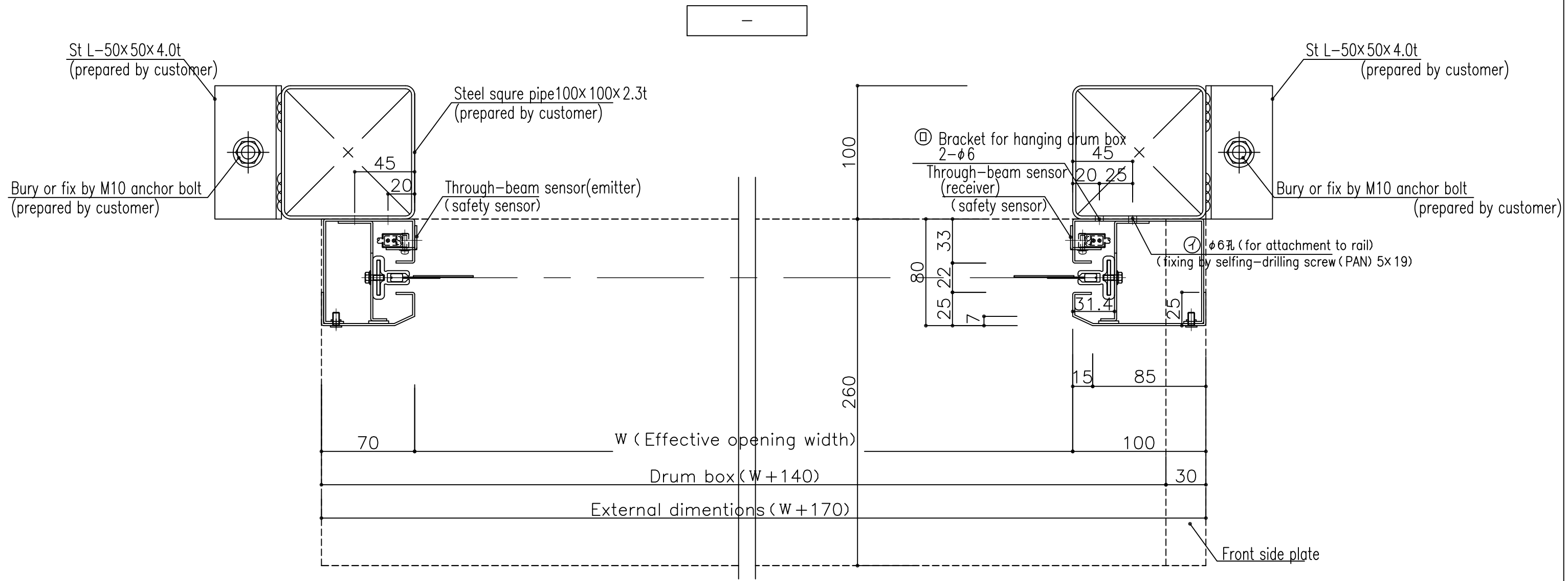


\* Installing position of the control box / push button switch should be decided according to site conditions.  
\* Appropriate model of startup sensor should be selected according to site conditions.

High-speed Roll-up Door  
JETTER JT-1T  
Image of basic installation



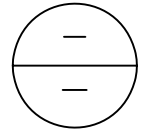
scale 1/30  
Drawing No 01  
Date - . - . -



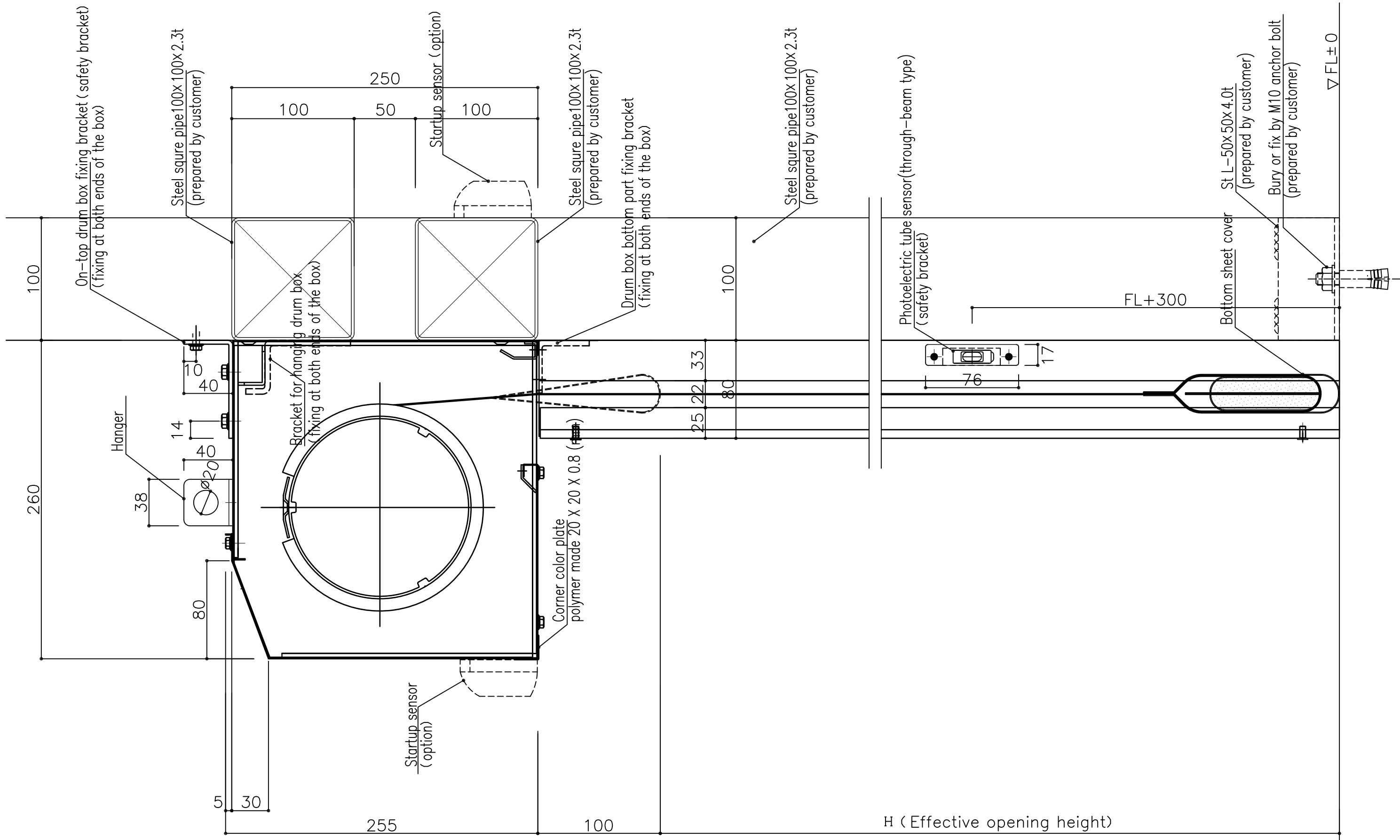
\* This image is for standard spec. with the motor mounted on the right side.  
 100mm wide right side and 70mm wide left side rails introduced.  
 \* As an option, we can supply units with motor mounted on the left as well.  
 In this case, 100mm wide left side and 70mm right side rails introduced.  
 Control box shall be placed on the left of the front (rails).

※ Construction of bases for installation should be discussed at each site according to the site conditions.

A-A' section

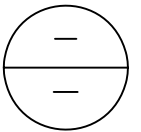


•	•			High-speed Roll-up Door JETTER JT-1T cross section				scale 1/3	
•	•							Drawing No 02	
•	•							Date - . - . -	



A-A' section

※Construction of bases for installation should be discussed at each site according to the site conditions.

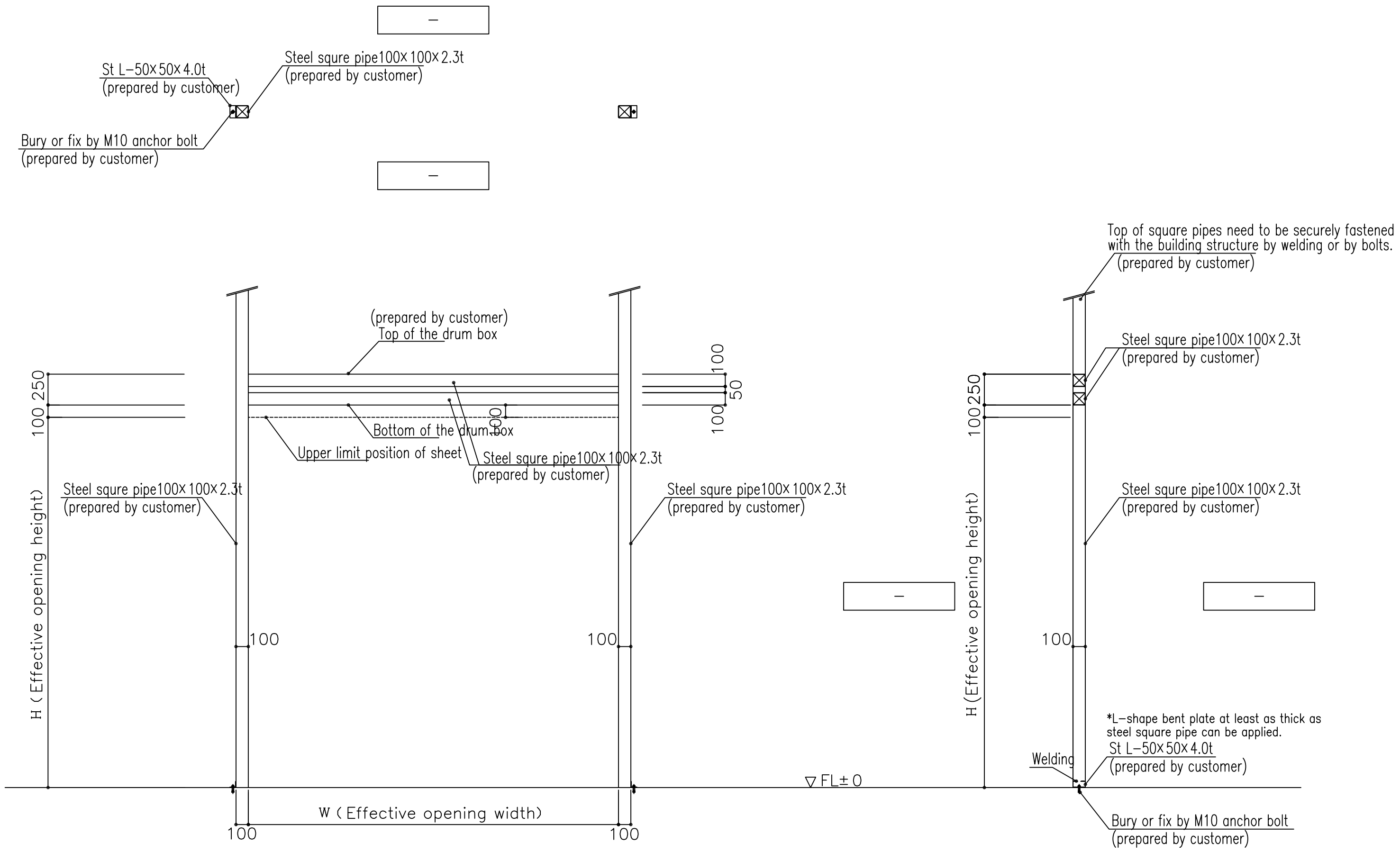


•	
•	
•	
•	
•	
•	

High-speed Roll-up Door  
JETTER JT-1T  
Vertical section

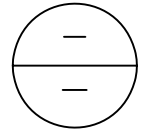


Scale	1/3	Drawing No	03
Date	- . - . -		



B-B' section

※Construction of bases for installation should be discussed at each site according to the site conditions.



•	•			High-speed Roll-up Door				scale	-
•	•			JETTER JT-1T				1/3	Drawing No 04
•	•			Bases for installation				/	Date - . - . -