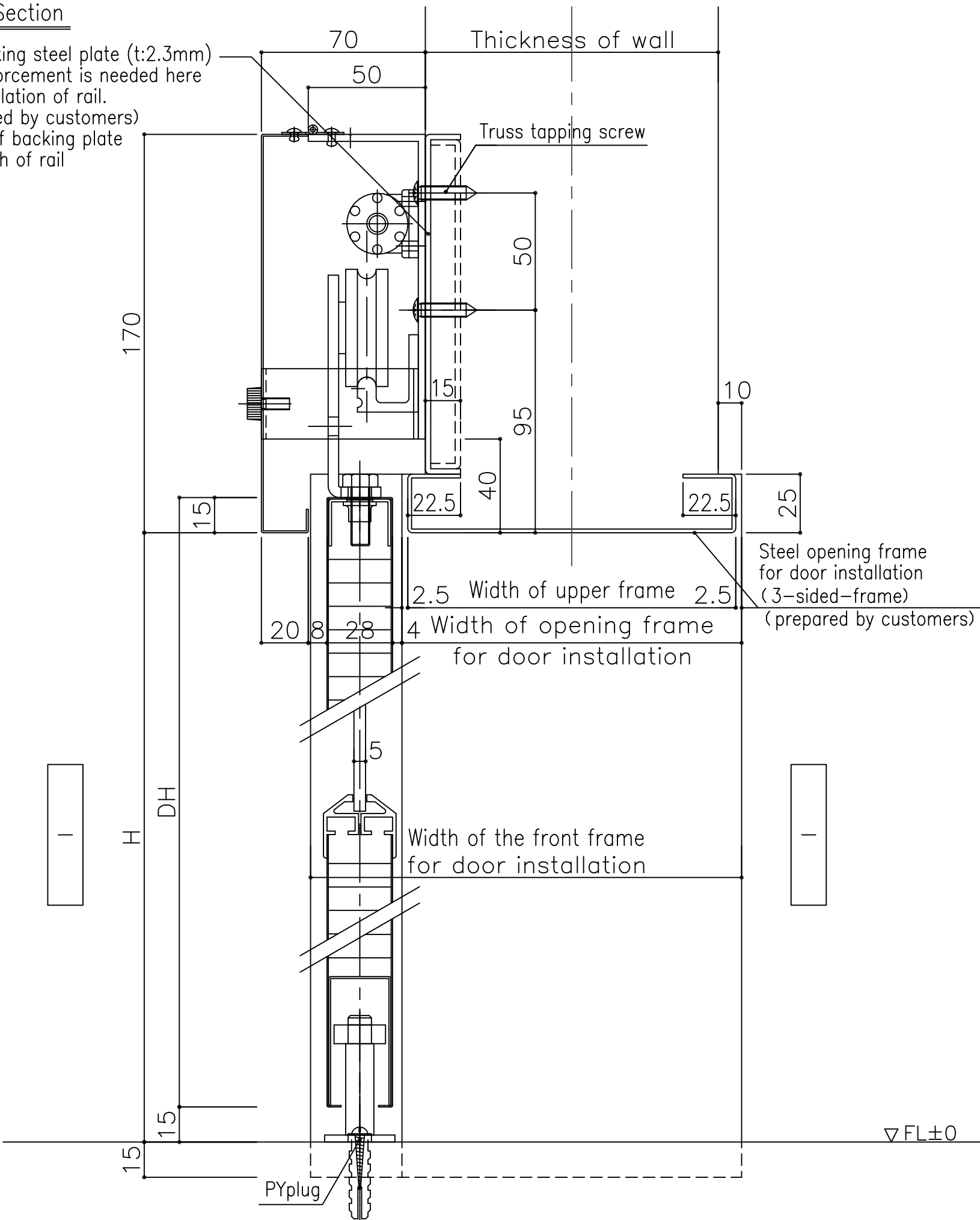




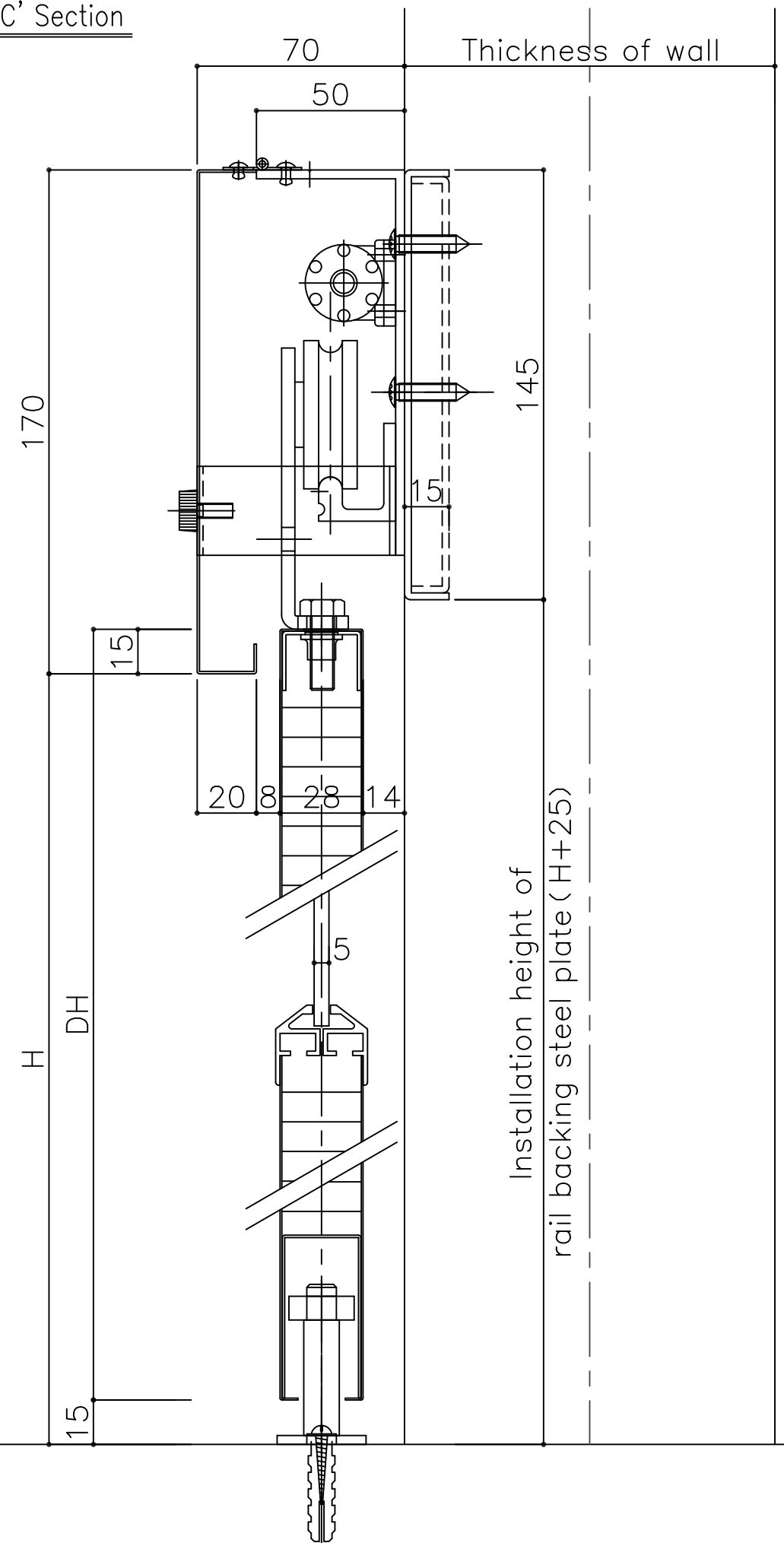


B-B' Section

Rail backing steel plate (t:2.3mm) for reinforcement is needed here for installation of rail.  
(prepared by customers)  
Length of backing plate = Length of rail



C-C' Section



---	---
••••	---
••••	---
••••	---
••••	---

Project Title  
スライド SL 基本図

Drawing Name  
UNIFLOW Slide Door  
Model: SL (V1-standard)  
《Vertical cross section》



Checked by 三木  
Checked by 高浜  
Drawn by GL

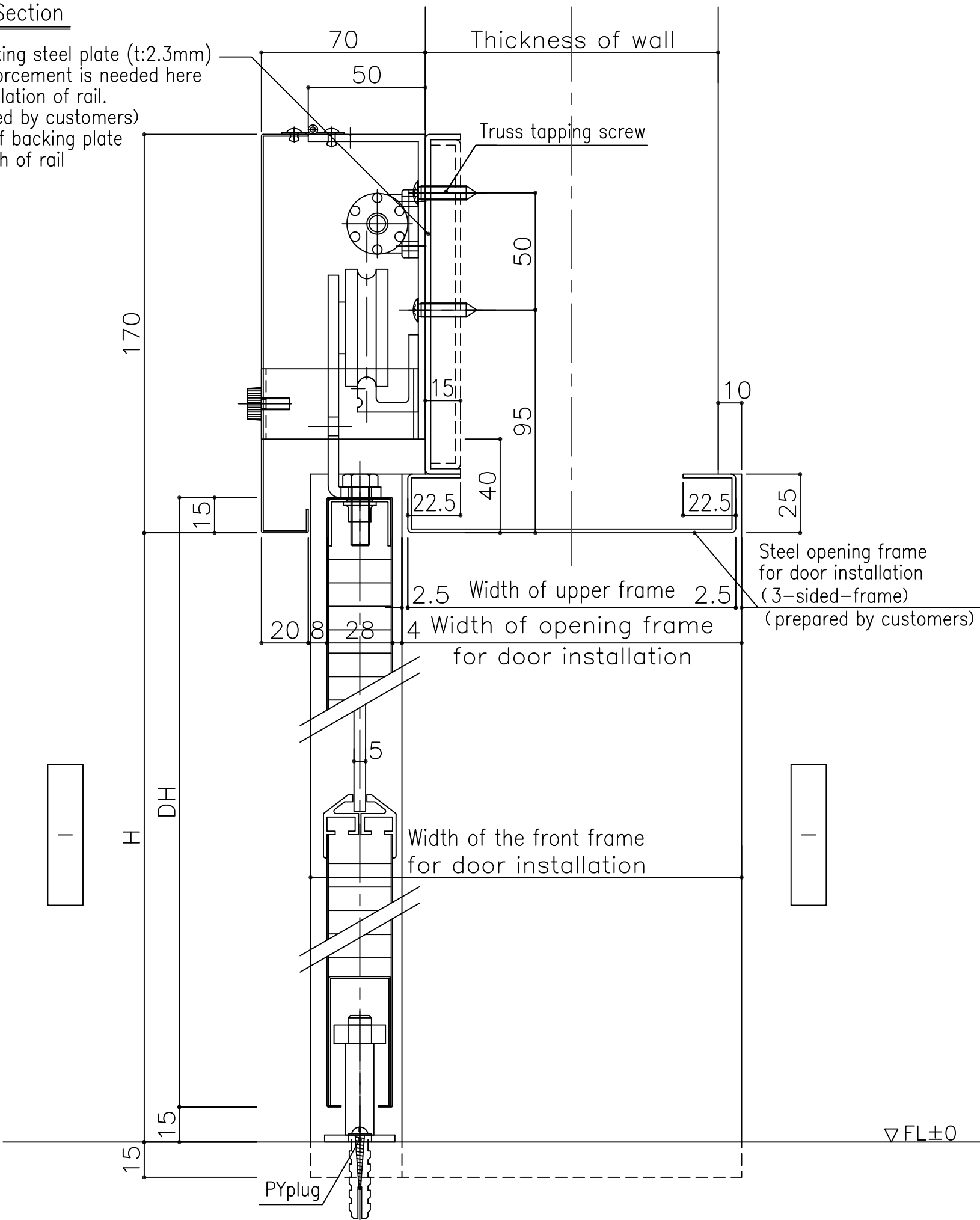
Scale 1/2  
Reference No GS1508009  
Page No 03  
Date 15・08・18



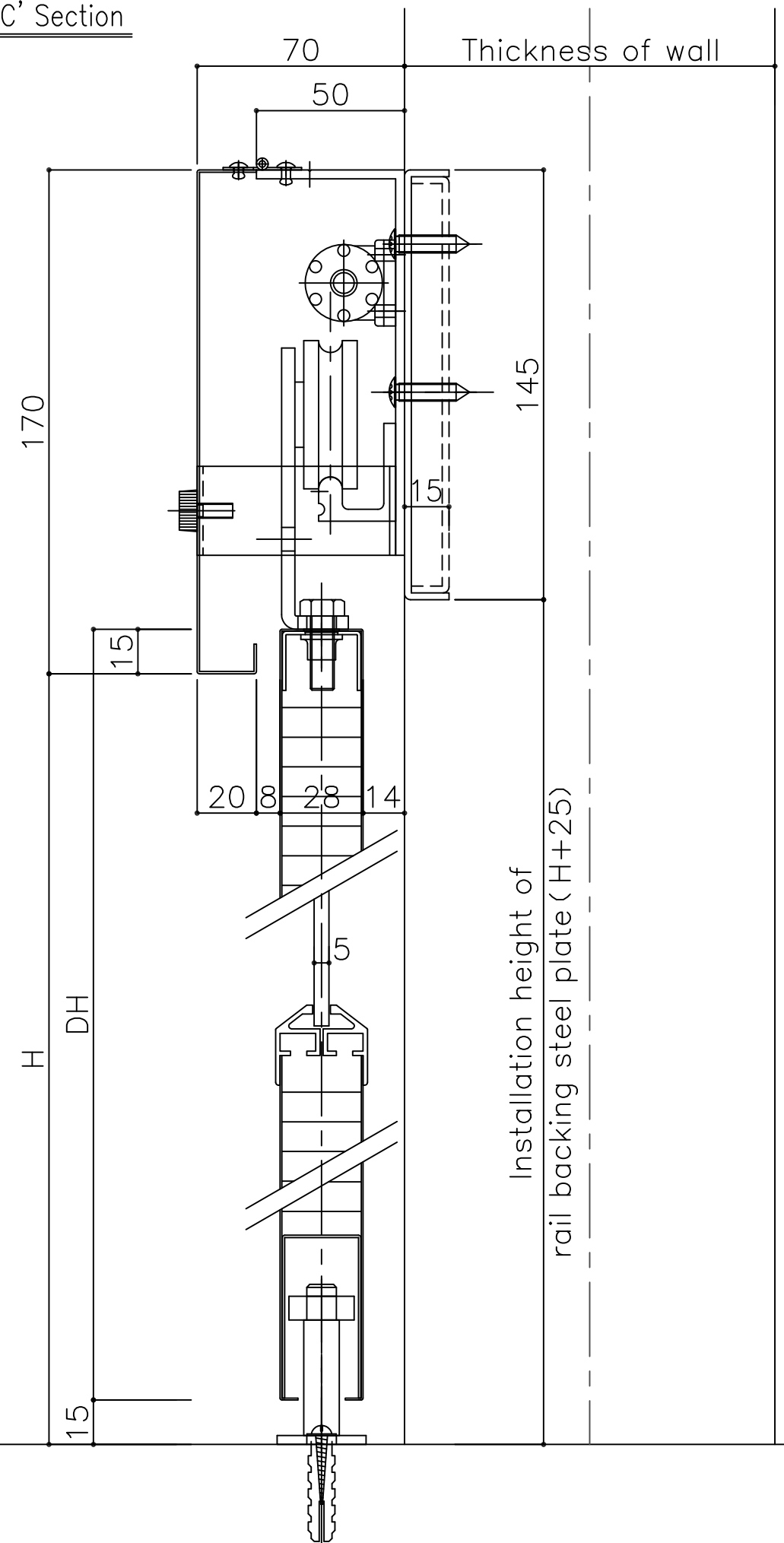


B-B' Section

Rail backing steel plate (t:2.3mm) for reinforcement is needed here for installation of rail.  
(prepared by customers)  
Length of backing plate = Length of rail



C-C' Section



---	---
••••	---
••••	---
••••	---
••••	---

Project Title  
スライド SL 基本図

Drawing Name  
UNIFLOW Slide Door  
Model: SL (V1-standard)  
《Vertical cross section》



Checked by 三木  
Checked by 高浜  
Drawn by GL

Scale 1/2  
Reference No GS1508009  
Page No 03  
Date 15・08・18

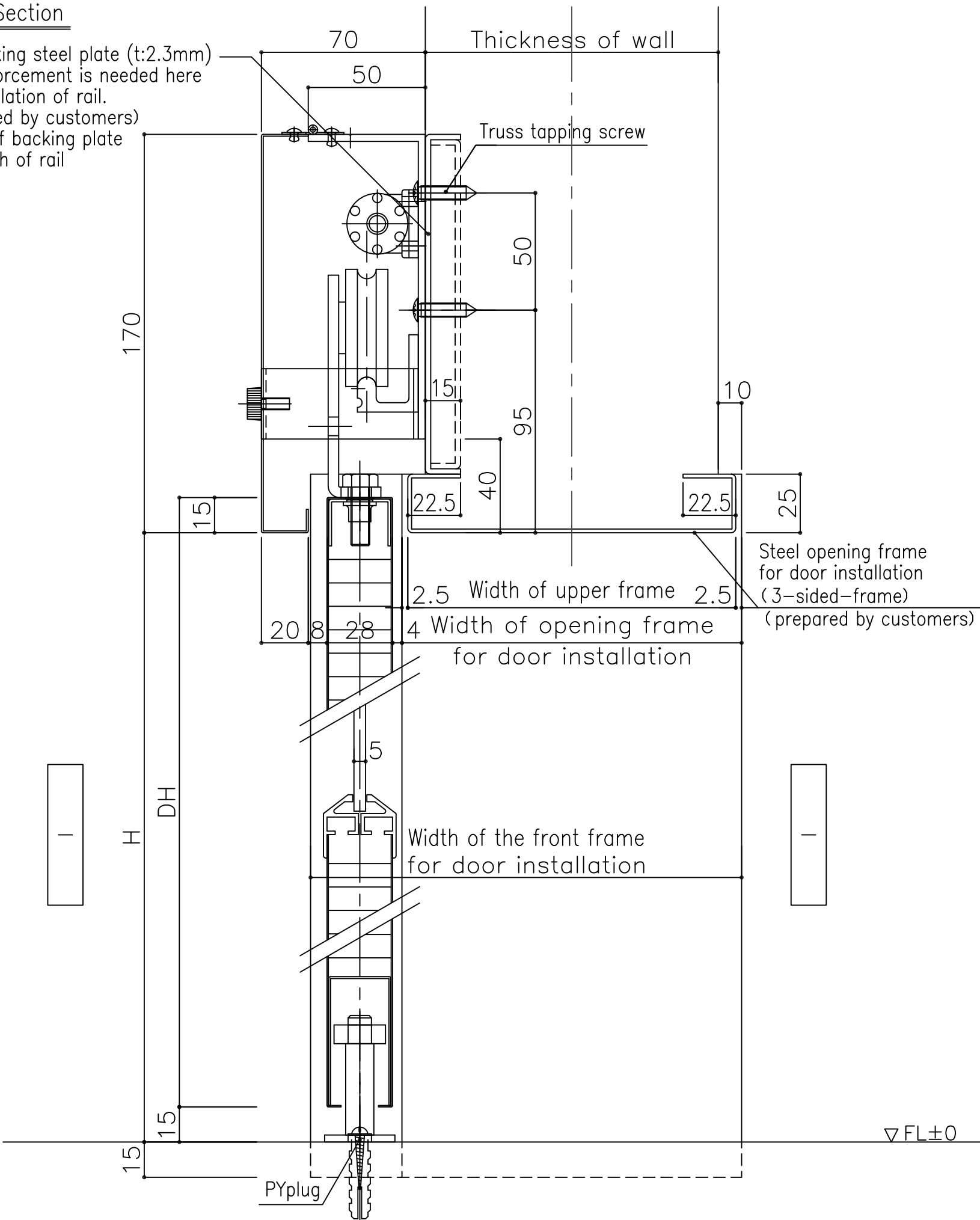




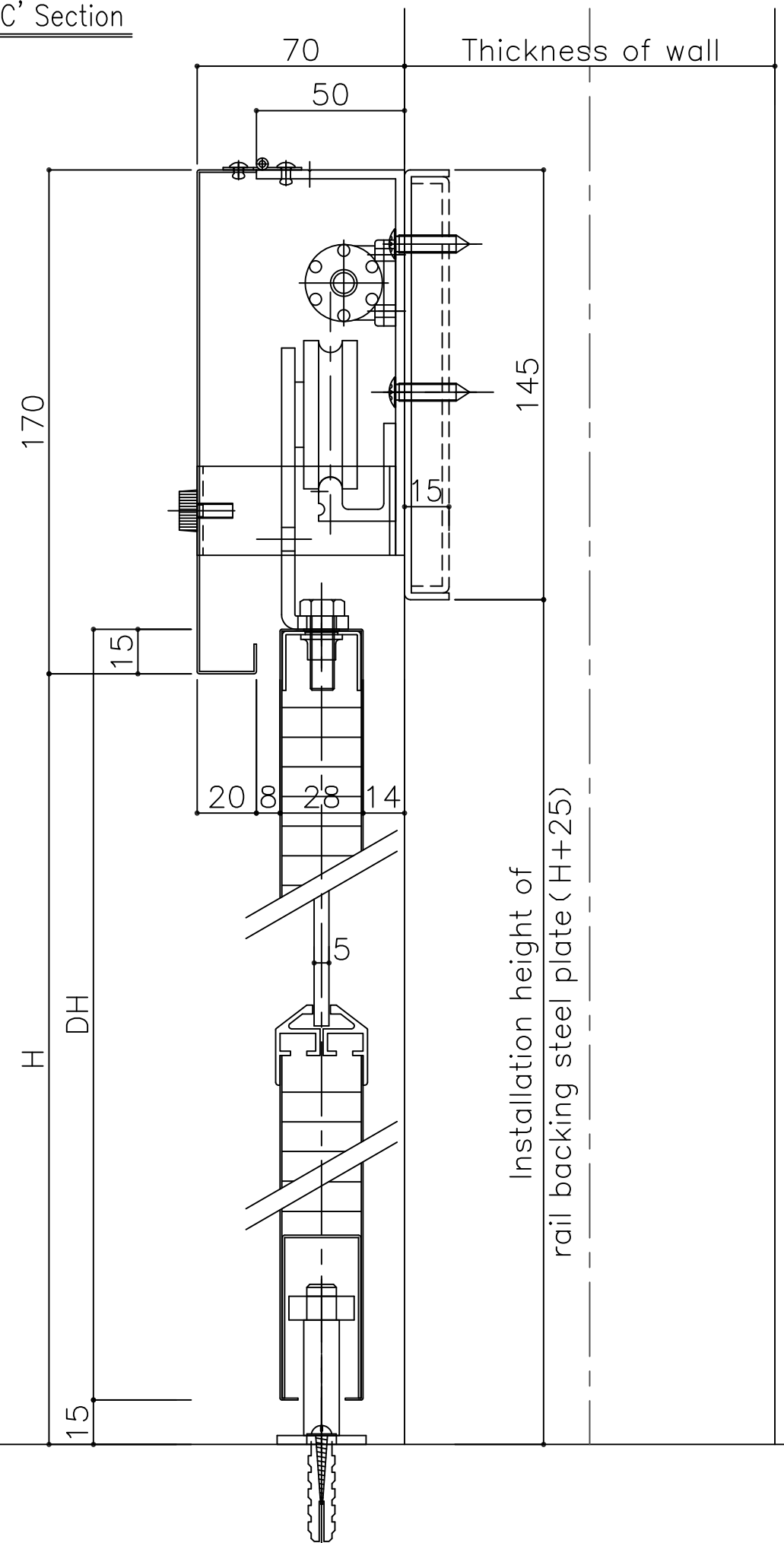


B-B' Section

Rail backing steel plate (t:2.3mm) for reinforcement is needed here for installation of rail.  
(prepared by customers)  
Length of backing plate = Length of rail



C-C' Section



---	---
••••	---
••••	---
••••	---
••••	---

Project Title  
スライド SL 基本図

Drawing Name  
UNIFLOW Slide Door  
Model: SL (V1-standard)  
《Vertical cross section》



Checked by 三木  
Checked by 高浜  
Drawn by GL

Scale 1/2  
Reference No GS1508009  
Page No 03  
Date 15・08・18

Rail backing steel plate (t:2.3mm)  
for reinforcement is needed here  
for installation of rail.  
(prepared by customers)  
Length of backing plate = Length of rail

Possible dimensions for production

	Single leaf	Double leaves
Effective Opening width (AW)	$525 \leq AW \leq 1500$	$1050 \leq AW \leq 3000$
Opening Height (H)	$1100 \leq H \leq 2500$	

Dimensions of window

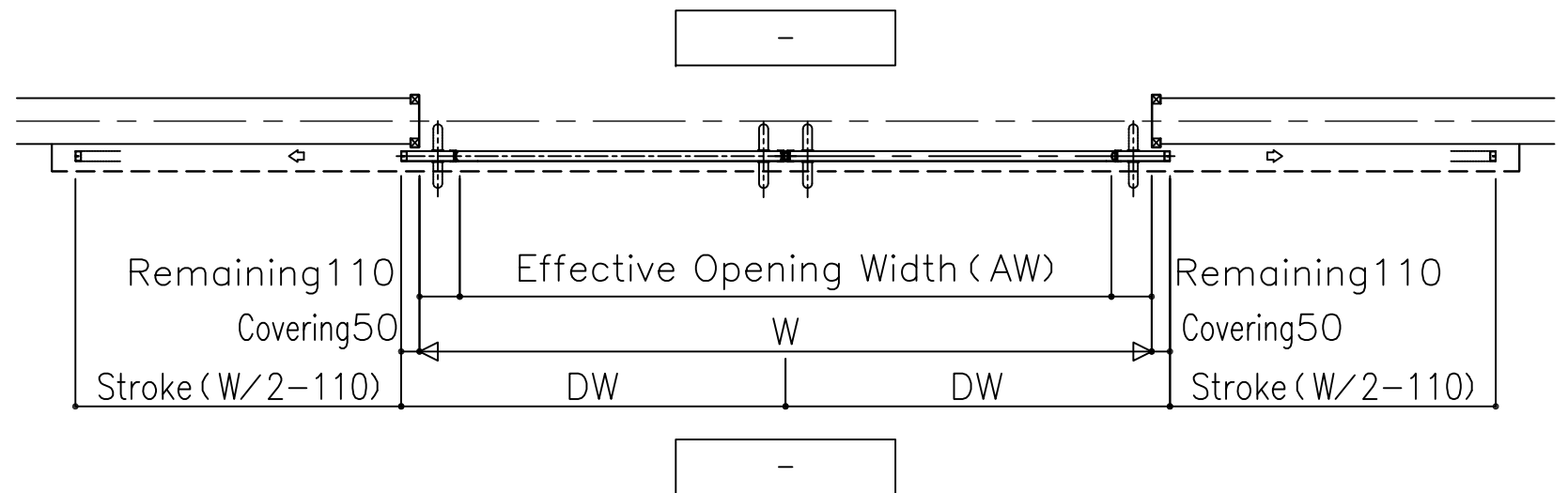
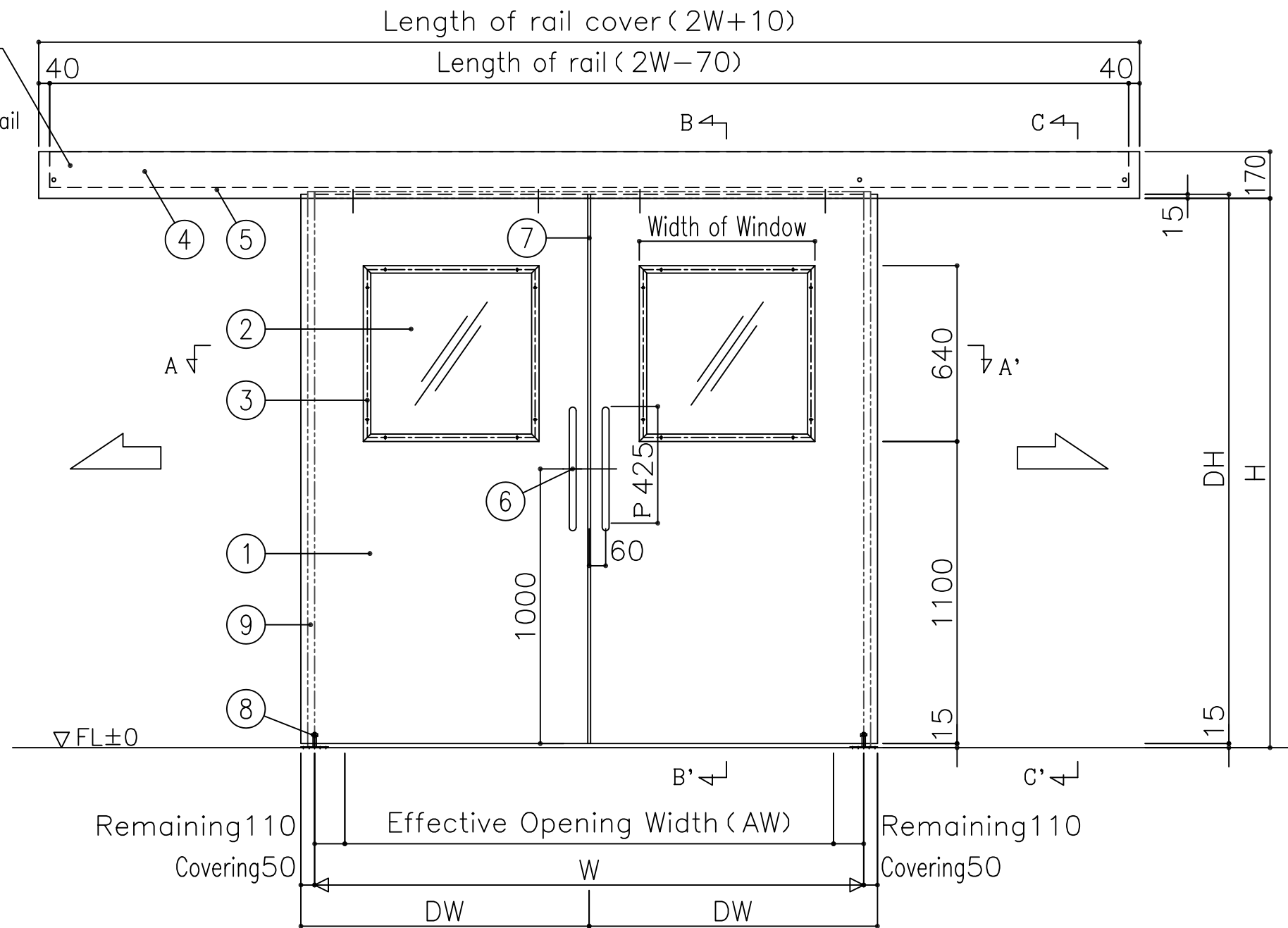
Width of door (DW)	Width of Window	Height of Window
$685 \leq DW < 940$	340	640
$940 \leq DW < 1240$	640	
$1240 \leq DW \leq 1660$	940	

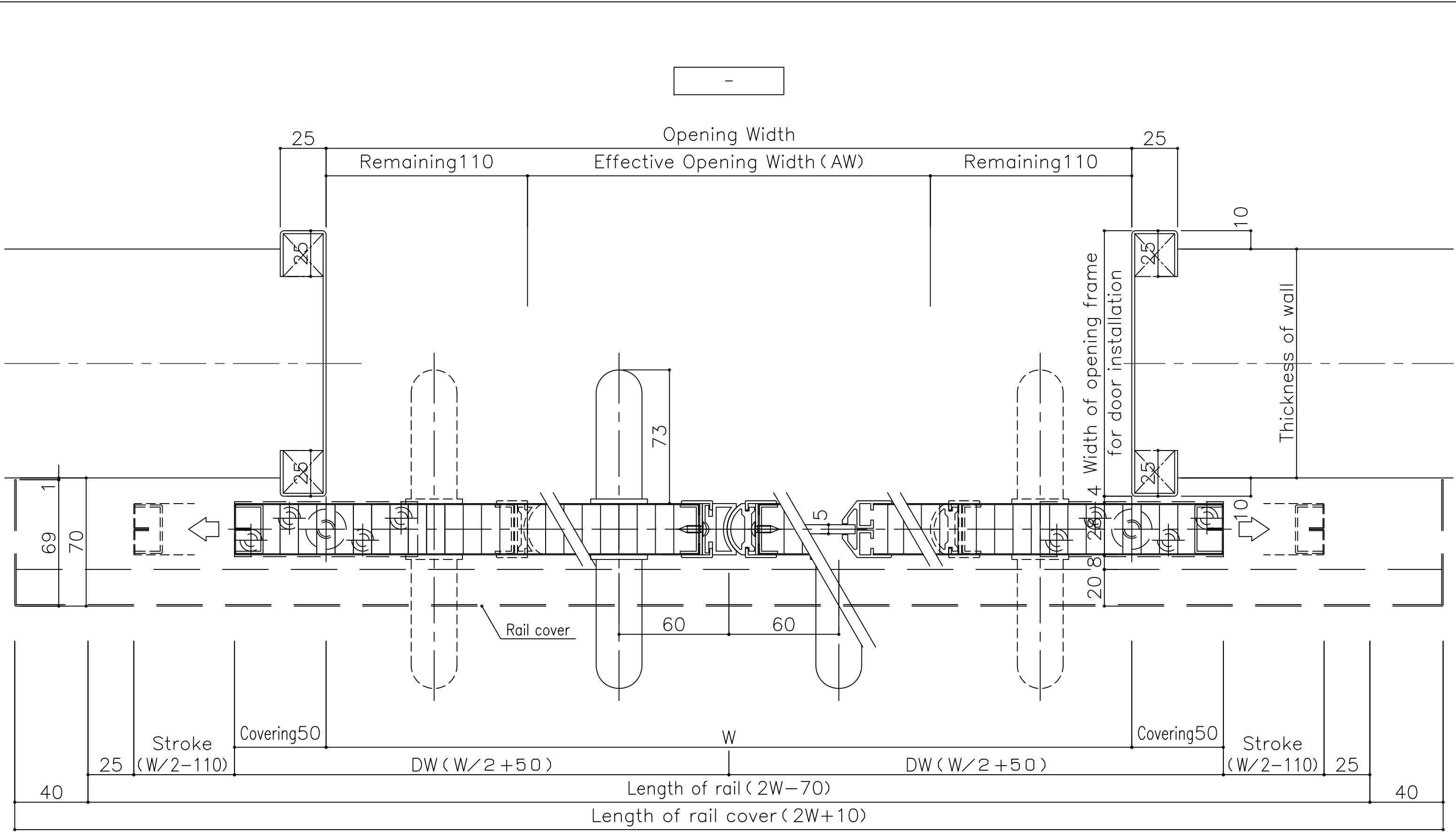
Sign	Quantity	Installation place
	-	~
Type	UNIFLOW Slide Door Model: SL (Double leaves)	
Accessory	Quantity	Model

※ Core of door : paper core

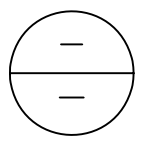
※ Opening frame for door installation (3-sided-frame) should be prepared by customers.

No.	Name	Material	Remark
1	Surface material	Colored steel plate	thickness 0.6 mm / color : ivory
2	Window	Acrylic resin	thickness 5.0 mm/ color : clear
3	Window frame	Aluminum alloy extruded	color: alumite silver
4	Rail	Unit of automatic closing system,etc	-
5	Rail cover	Colored steel plate	thickness 0.6 mm / color : ivory
6	Grip	Stainless steel	25 mm $\phi$ / L=450mm
7	Door contact rubber	PVC extruded (PVC resin)	-
8	Guide roller	Stainless steel / Polyacetal	-
9	Opening frame (3-sided-frame)	Steel	Prepared by customers





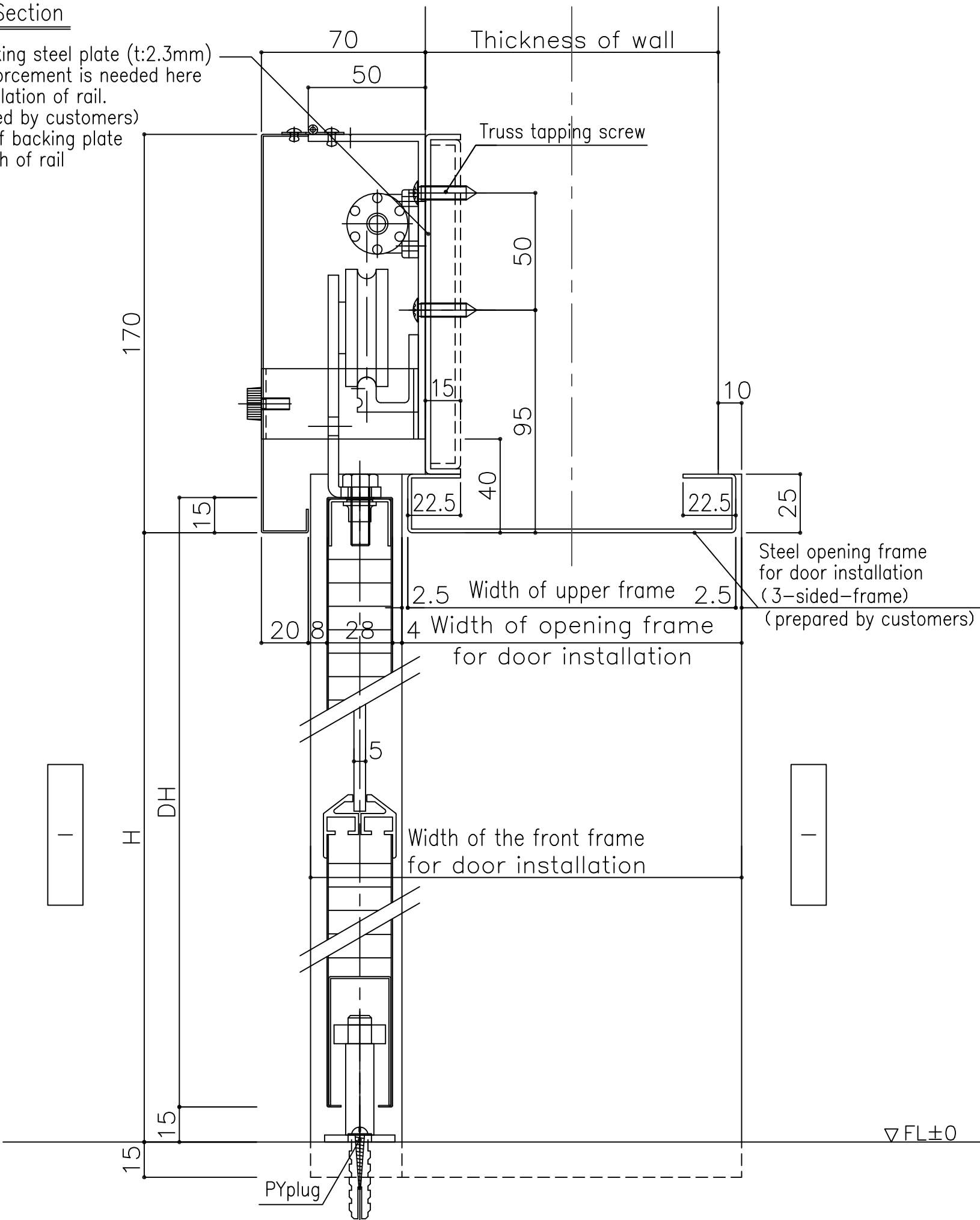
A-A' Section



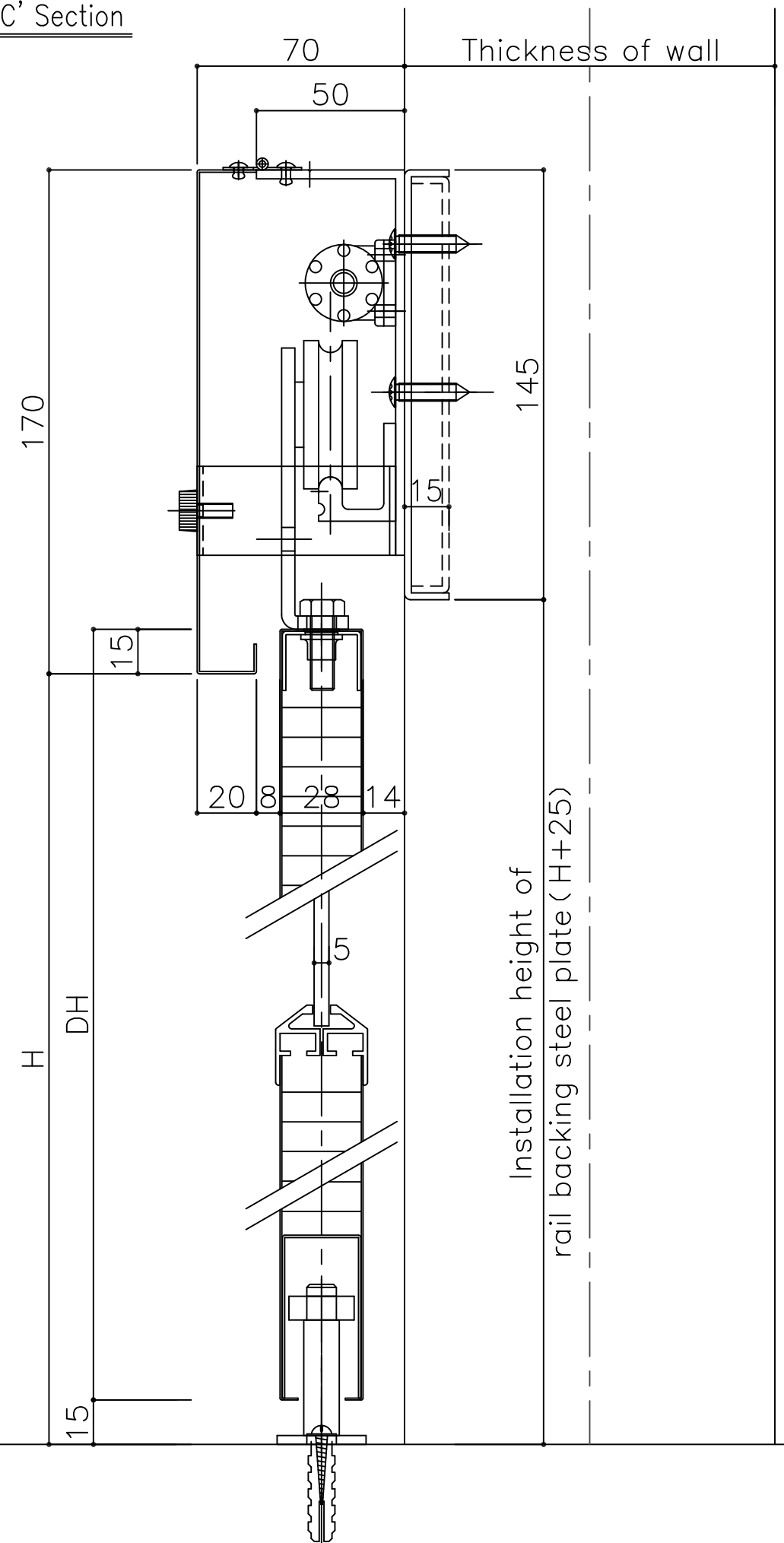
	Project Title	Drawing Name	Checked by	Checked by	Drawn by	Scale	Reference No
	スライド SL 基本図	UNIFLOW Slide Door Model: SL (V1-standard) -Double leaves 《Horizontal cross section》	三木	高浜	GL	1/2	GS1508009
						/	Page No 02
							Date 15・08・18

B-B' Section

Rail backing steel plate (t:2.3mm) for reinforcement is needed here for installation of rail.  
(prepared by customers)  
Length of backing plate = Length of rail



C-C' Section



---	---
••••	---
••••	---
••••	---
••••	---

Project Title  
スライド SL 基本図

Drawing Name  
UNIFLOW Slide Door  
Model: SL (V1-standard)  
《Vertical cross section》



Checked by 三木  
Checked by 高浜  
Drawn by GL

Scale 1/2  
Reference No GS1508009  
Page No 03  
Date 15・08・18