

# OPTION

## Sensors

For a small-size opening, that allows people or trolleys to pass through

### Infrared sensor OA-3500S

External dimension: W267×H61×D38mm  
Mountable height (from FL): 2~3.5m Static  
detection : 2,15,60 sec / Infinity  
Power supply : AC/DC12~24V  
Mountable model :  
RB-1,RB-1Ta,RX-2,RX-3,RX-4



### Infrared sensor SHA-3200

External dimension: W210×H59×D28.5mm  
Mountable height (from FL): 2~3.2m  
Static detection : 2,10,60 sec / Infinity  
Power supply : AC / DC24V  
Mountable model:  
RB-1,RB-1Ta,RX-2,RX-3,RX-4



For a small-size to medium-size opening, with a wider infrared radiation area

### Infrared sensor OA-4700S

External dimension : W267×H62×D45mm  
Mountable height (from FL) : 2.5~4.7m  
Static detection : 260 sec / 10 min / Infinity,  
Power supply : AC/DC12~24V  
Mountable model : RB-1,RB-1Ta,RX-2,RX-3,RX-4  
Remarks : Rainproof cover available (sold separately)



### Infrared sensor SHA-4701

External dimension : W265×H61×D37.5mm  
Mountable height (from FL) : 2.0~4.7m  
Static detection : [1,2,3 Row] 2,10,30 sec  
/ Infinity[4,5 Row] 2,10 sec  
Power supply : AC / DC12~24V  
Mountable model : RB-1,RB-1Ta,RX-2,RX-3,RX-4  
Remarks : Rainproof cover available (sold separately)



For a small-size to medium-size opening, with high-intensity radiation area

### Intelligent sensor II OAM-EXPLORER J

External dimension : W207×H157.5×D118mm  
Mountable height (from FL) : 2.0~6.2m (An operation confirmation  
is required if detecting a person at more than H5.2M.)  
Static detection : 2,10,30 sec / 1,3,10 min / Infinity  
Power supply : AC / DC12~24V  
Mountable model : RB-1,RB-1Ta,RX-2,RX-3,RX-4  
Remarks : Crossing canceling function, Direction discriminating function,  
Infinite function in plural areas, Remote control application setting



### Infrared sensor SHA-6502

External dimension : W321×H101.8×D90.5mm  
Mountable height (from FL) : 2.0~6.5m  
Static detection : 2,10,30 sec / Infinity  
Power supply : AC / DC12~24V  
Mountable model : RB-1,RB-1Ta,  
RX-2,RX-3,RX-4  
Remarks : Direction detecting function, traverse cancel function,  
rainproof construction, (separately sold), remote control



Detecting just a vehicle is possible, durable against natural environment.

Wide detection area, adjustable in length and width separately with increments of 10cm.

### FALCON / FALCON XL

External dimension : W103×H97×D160mm  
Mountable height (from FL) : 2~3.5m (FALCON XL)  
3.5~7m (FALCON)  
Detection system: Microwave Doppler system  
(moving body detection)  
Power supply : AC / DC12~24V  
Mountable model : RB-1,RB-1Ta,RX-2,RX-3,RX-4  
(FALCON is only available for RX-2,RX-3,RX-4)  
Remarks : Water repellence (IP65 level),  
a remote controller is available (sold separately)



### Laser scanner J

External dimension: W124.8×H83.7×D92.5mm  
Mountable height (from FL): 0.5~9.9m  
Detection system: Laser (stationary detection)  
Power supply : DC24V  
Mountable model : RB-1,RB-1Ta,RX-2,RX-3,RX-4  
Notes: 2 detection area setting, remote control setting



## Switches

	Wireless remote control (1-key type / 3-key type)	Pull switch	Non-contact sensor	Single pushbutton switch	Explosion-proof single pushbutton switch
Type	Receiver: RX13-1143 Transmitter: TX20-1011UF	—	OMH-100D	WBSTT 221 ON	SJW4200
External dimension	W36×H80×D12.3 (Transmitter)	W140×H154×D33 (Main body portion)	W70×H120×D7.5 (Main body portion)	W60×H98×D47.5	W82×H134×D81
Power supply	DC12~24V	—	DC12~24V	—	—
Power consumption	—	—	Less than 0.96W	—	—
Mountable model	RB-1,RB-1Ta, RX-2,RX-3,RX-4	RB-1,RB-1Ta, RX-2,RX-3,RX-4,RA-2Es	RB-1,RB-1Ta, RX-2,RX-3,RX-4	RB-1,RB-1Ta, RX-2,RX-3,RX-4	RA-2Es
Remarks	Possible to use 100 transmitter units in each group, maximum 200 units for one receiver	—	Dust-proof & jet-proof IP55 (Installed on a flat wall)	Explosion-proof & jet-proof IP65	Explosion-proof grade d2G4

## Other options

- Guard pole
- Revolving light (Red, Yellow, Green, Blue)
- 3-point push button
- Photoelectric sensor (phototransmitting / photoreceiving type)
- Buzzer
- Countdown Indicator (Compatible with RX series only) etc.

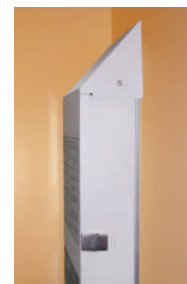
## HACCP compatible option

An insect-resistant orange sheet certainly repels insects, a high performance airtight gasket (option) can also enhance an insect-proof and a dust-proofing effect. In addition, attaching a slope cover on a drum box or a control box makes it easier to confirm its contamination state.

Apart from that, a stainless steel-made rail or a drum box, and baking coating finishing are available.



▲ Example of use:  
Slope top for drum box



▲ Example of use:  
Slope top for control box

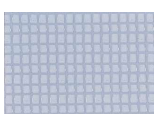
## Sheet

[Standard] (Standard specification for RB, RX excluding RB-1)

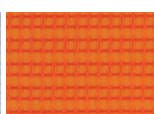
[Antistatic Flame retardant] (RB-1)

[Antistatic Flame retardant](opaque)

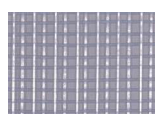
[Antistatic Flame retardant] (RA-2Es)



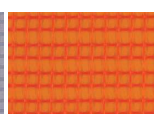
Transparent sheet  
(Flame-retardant finish)



Insect-resistant orange sheet  
(Flame-retardant finish)



Transparent sheet  
(Antistatic flame-retardant finish)  
\*Not available on RX-4



Insect-resistant orange sheet  
(Flame-retardant finish)



Yellow



Green



Gray



Ivory sheet  
(Explosion-proof finish)

		Base fabric/surface material	Surface treatment	Light transmission	Certified flame retardant	Thickness (mm)
Standard (Flame-retardant)	Clear	Polyester/PVC	Acrylic fluorine antifouling treatment	60% or more	A1150124 · F-04009	0.75
	Clear orange			35% or more		
Antistatic and flame-retardant	Clear			—	B1170028 · F-29251	0.42
	Clear orange			35% or more	A1150123 · F-04009	0.75
Antistatic and flame-retardant (opaque)	Yellow	Polyester/PVC	Fluorine antifouling treatment	10%	F-01022	0.55
	Green			Less than 1%		
	Gray			Less than 0.2%	F-17061	0.52
Antistatic and flame-retardant		Glass fiber/PVC	—	8%	NM-3671	0.58

\* The Fire defence Agency registration No.AE-13-1223

\* For details on the flame-retardant and opaque sheets for RX-4, please contact us

## Sheet option for window



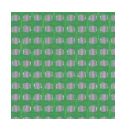
Clear\*



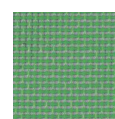
Clear orange\*



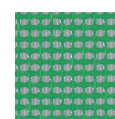
Flame-retardant clear



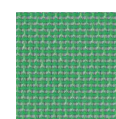
Light green 1003\*



Light green 1004\*



Dark green 1003\*

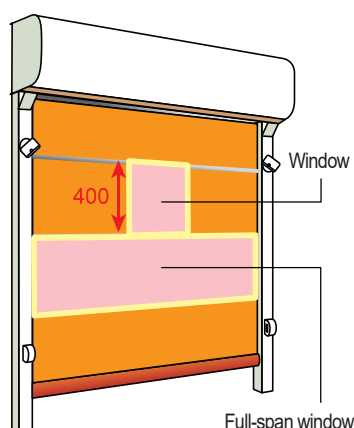


Dark green 1004\*

\* A flame retardant product label is attached when a window is attached to a flame retardant sheet.

## Sheet window

Attaching a sheet window enables to see a person or a forklift at an opposite side in which can avoid collision accident etc. Available window options are Clear, Insect-resistant clear orange, Mesh, Flame-retardant clear.



	Window			Full-span window	
	Maximum width	Minimum width	Height	Width	Height
RB-1	W-500	400	400	W+110	Maximum height set for each segment
RB-1Ta				W+100	
RX-2				—	—
RX-3	W-800	400	400	—	—
RX-4	W-500			—	—
RA-2Es	W-500	—	—	—	—

\* Mesh window does not comply with a full-span window.

\* For RB-1, if the opening width is less than 900, the maximum window is W-300.

\* The flame retardant transparent type window for the RA-2Es become bleached over time due to deterioration.

OPTION Jetter

Main body

Colored steel plate (Ivory)

Stainless plate (304HL)

Sheet

Flame retardant (Transparent)

Flame retardant (Insects-proof orange)

Anti-slatic and Flame retardant (Transparent)

Anti-slatic and Flame retardant (Insects-proof orange)

Anti-slatic and Flame retardant (Ivory)

Special mesh window material Mesh1003

Special mesh window material Mesh1004

Option

Sensors	Infrared Sensor	Infrared Sensor	Infrared Sensor	Switches	Wireless remote Control (1-key/3-key type)	String Switch	Single pushbutton
Models	SHA-4701	OA-3500S	OA-4700S	Models	Receiver : RX13-1143 Transmitter : TX20-1011UF	—	WBSTT 221 ON
Outside dimension (mm)	W265×H61×D37.5	W267×H61×D38	W267×H62×D45	Outside dimension(mm)	W36×H80×D12.3 (Transmitter)	W140×H154×D33 (Main Body)	W60×H98×D47.5
Power supply	AC/DC12~24V	AC/DC12~24V	AC/DC12~24V	Power supply	DC12~24V	—	—

Others

Backup power system

Dormer-window

Orange color bottom sheet

HACCP cover

Motor on the left (JT-1T, JT-2T)

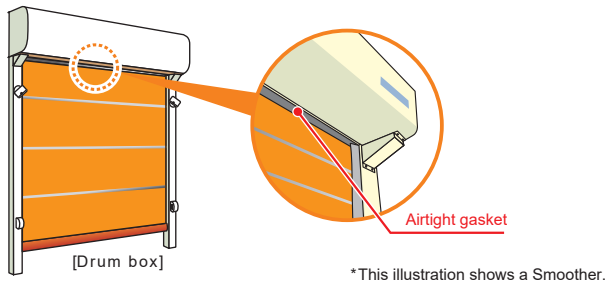
Airtight gasket

\* In case of the effective width in W 4300mm or more, the sheet hanging dimensions in the center part and both end parts may differ.  
\* Notice: Keep the door (sheet) open when the unit is not in use. Sheet might be off the rails due to rapid wind.

Highly airtight option

The airtight gasket offers 10× better sealing than conventional types, blocking insects and dust to keep the workspace clean. Compatible with JT-1, JT-1T, and JT-2T.

\*The Jetter airtight gasket is only installed on the Drum box. It is not attached to the rail part.



Interlock

2 sets of Jetter can be linked by microcomputer control. If one side is open, the other side can be operated with an interlock. It prevents outside air from entering, further improving air conditioning efficiency. By adding an option board, the system can be interlocked with belt conveyors, AGVs, and other equipment.

