

No.	Name	Material	Remark
1	Surface material	Stainless steel	thickness 1.2 mm
2	Window	Polycarbonate	color: transparent/thickness 4.0 mm
3	Window gasket	Synthetic rubber	color: black
4	Hinge cover	Stainless steel	190x140x26
5	Upper bracket in frame side	Steel SPC	Unichrome plating
6	Screw for bracket in frame side	Stainless steel	+flathead/M8x25
7	Lower bracket in frame side	Stainless steel	-
8	Screw for lower bracket in frame side	Stainless steel	+A flathead tapping 6 x30
9	Gasket	PVC	color:black
10	Spring bumper	Resin(LDPE)	color: black (both side) H=950 D=160
11	Opening frame for door installation (3-sided-frame)	Steel	To the point of rust proof treatment is provided

Core of door • • Thermal insulation foam (High best wood)  
Opening frame for door installation (3-sided-frame)  
and back plate for reinforcement  
should be prepared by customer.

Possible dimensions for production

	Double door
Opening width (W)	2000 ≤ W ≤ 3000
Opening height (H)	2000 ≤ H ≤ 3000

Code	How many	Where to install
⊖ -	-	~
Type	SWING DOOR SN-1 (double door)	

Drawing name  
UNIFLOW SWING DOOR  
SN-1 (double door)  
Image of basic installation

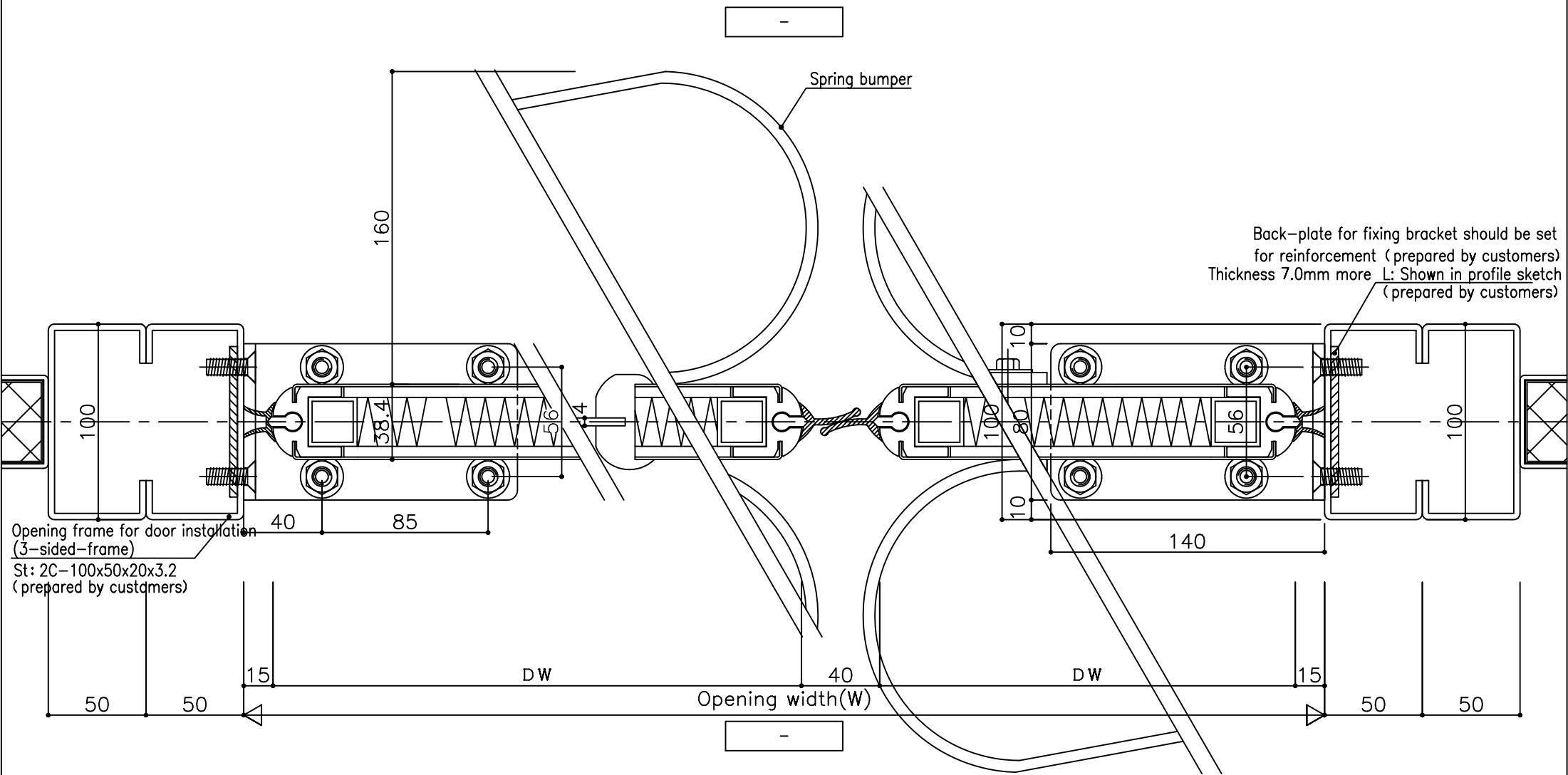
**UNIFLOW**

Scale

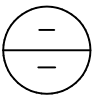
1/20

Drawing No. -

Date - . - . -



A-A' section

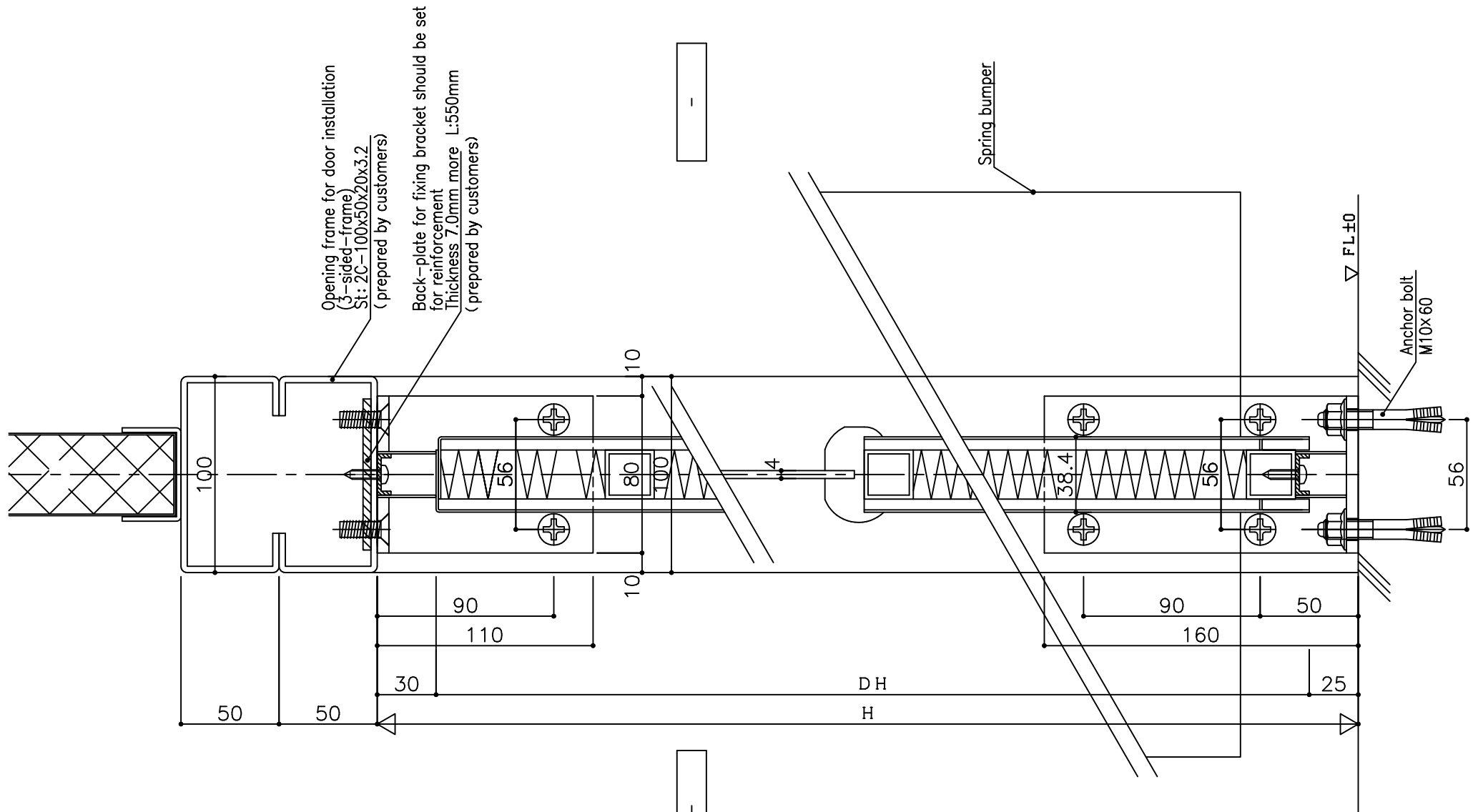


---	---
•••	---
•••	---
•••	---
•••	---

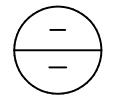
Drawing name  
 UNIFLOW SWING DOOR  
 SN-1 (double door)  
 cross section



Scale	1/2	Drawing No.	---
	/	Date	•••••



B-B' section

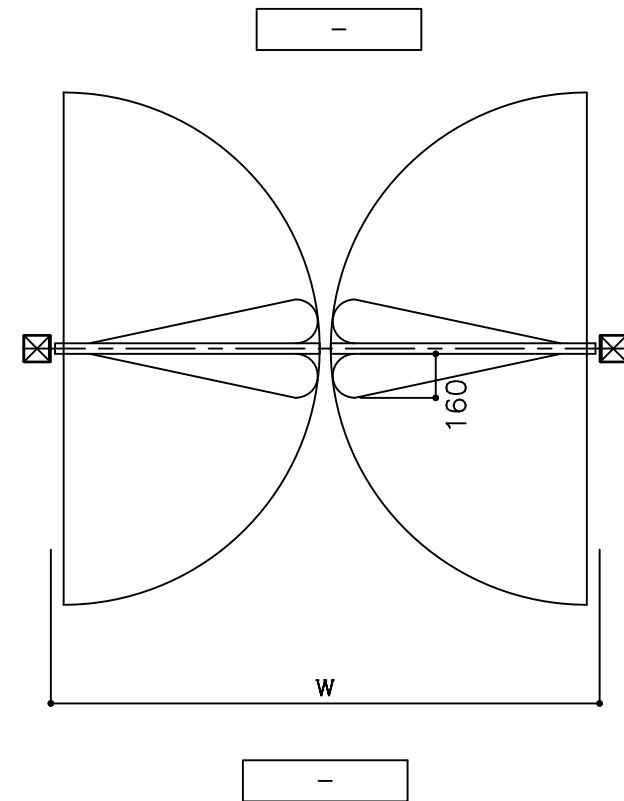
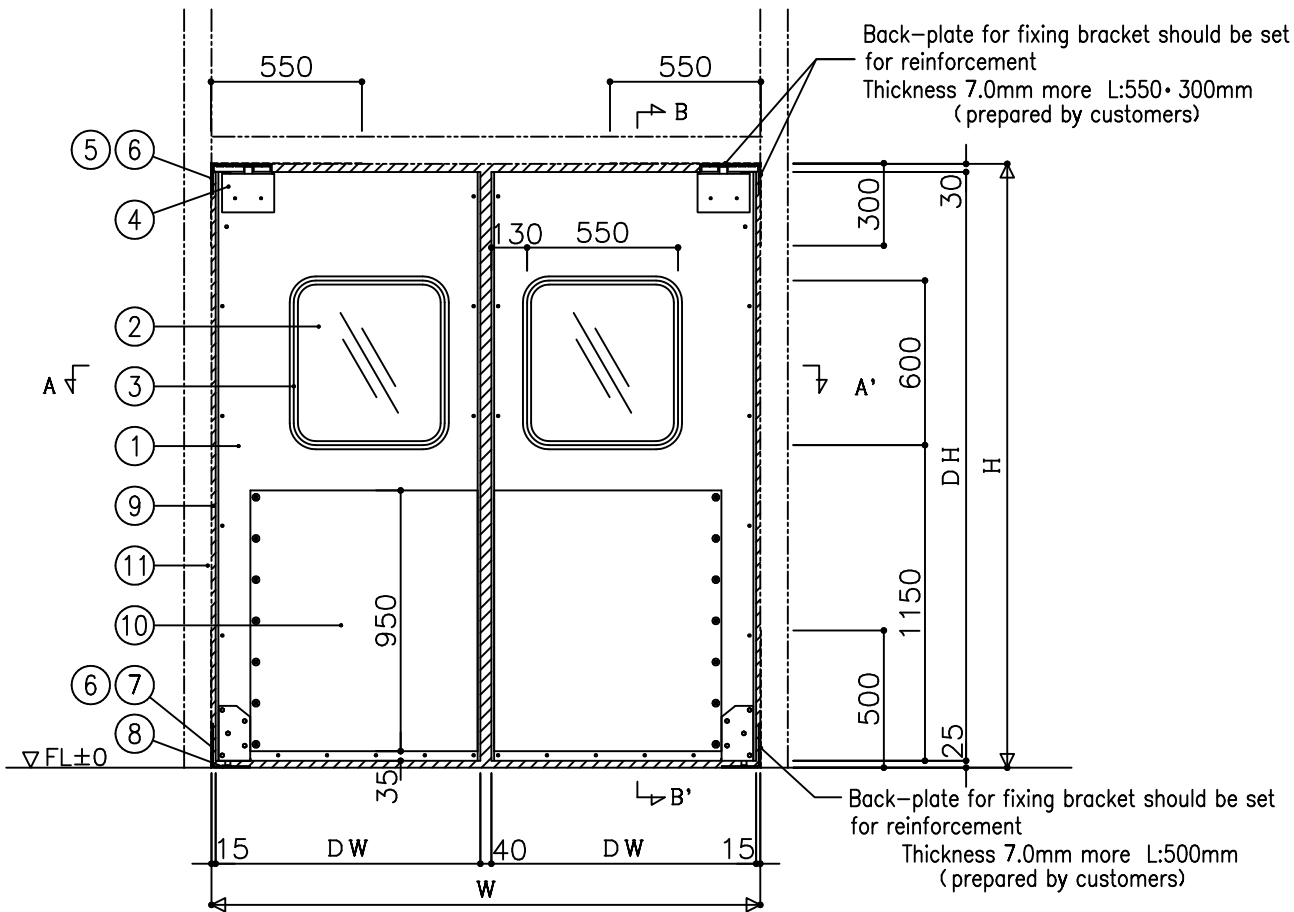


---	---
•••	---
•••	---
•••	---
•••	---

Drawing name  
UNIFLOW SWING DOOR  
SN-1  
vertical section



Scale	1/2	Drawing No.	---
	/	Date	•••••



No.	Name	Material	Remark
1	Surface material	Stainless steel	thickness 1.2 mm
2	Window	Polycarbonate	color: transparent/thickness 4.0 mm
3	Window gasket	Synthetic rubber	color: black
4	Hinge cover	Stainless steel	125x90x25
5	Upper bracket in frame side	Steel SPC	Unichrome plating
6	Screw for bracket in frame side	Stainless steel	+flathead/M8x25
7	Lower bracket in frame side	Stainless steel	-
8	Screw for lower bracket in frame side	Stainless steel	+A flathead tapping 6 x30
9	Gasket	PVC	color:black
10	Spring bumper	Resin(LDPE)	color: black (both side) H=950 D=160
11	Opening frame for door installation (3-sided-frame)	Steel	To the point of rust proof treatment is provided

\*Installation method of reinforcing backing plate for the square pipe needs to be discussed at the jobsite.

Core of door・T hermal insulation foam (High best wood)  
Opening frame for door installation (3-sided-frame)  
and back plate for reinforcement  
should be prepared by customer.

Possible dimensions for production

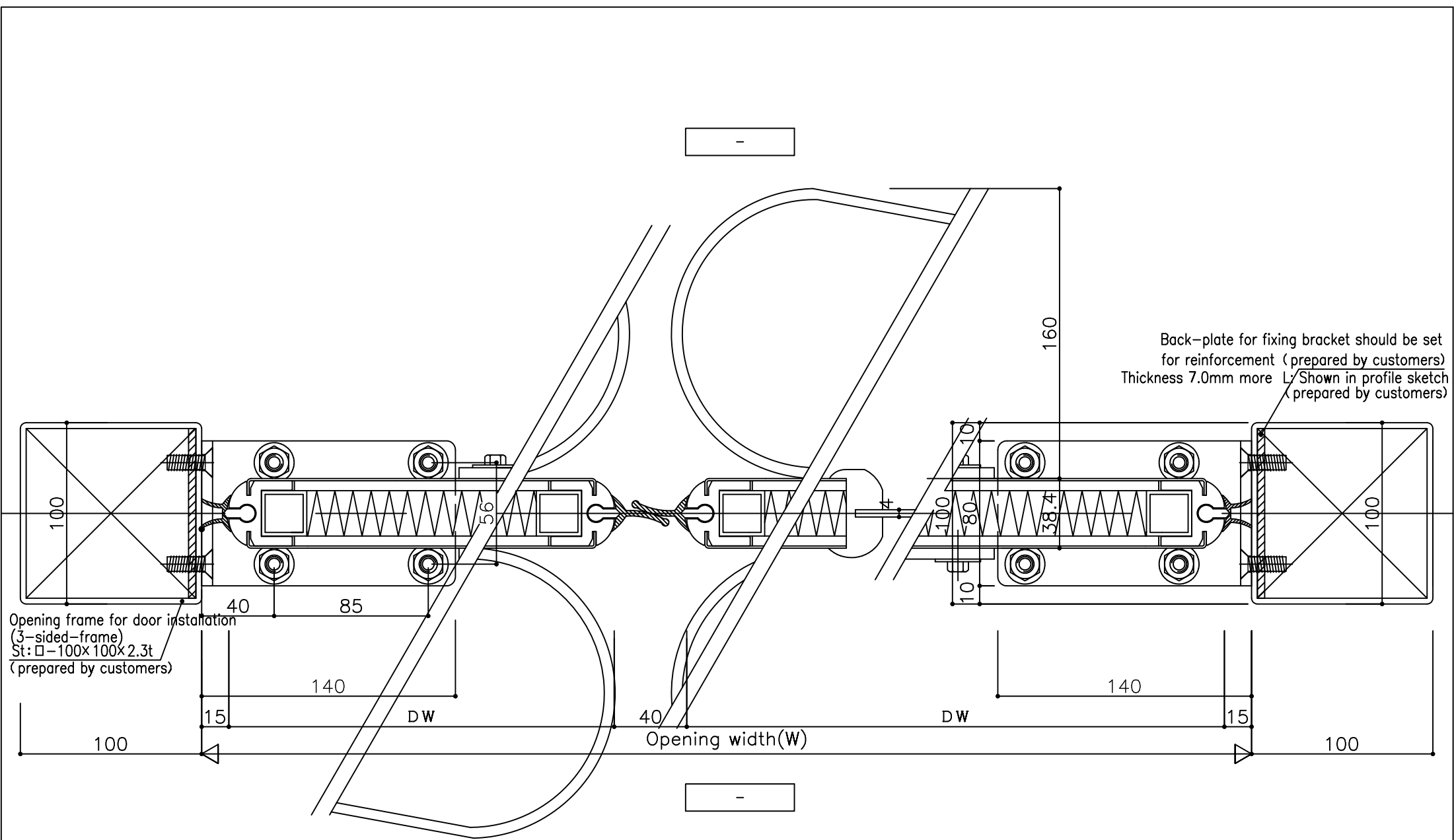
	Double door
Opening width (W)	2000 ≤ W ≤ 3000
Opening height (H)	2000 ≤ H ≤ 3000

Code	How many	Where to install
—	—	~
Type	SWING DOOR SN-1 (double door)	

Drawing name  
UNIFLOW SWING DOOR  
SN-1 (double door)  
Image of basic installation

**UNIFLOW**

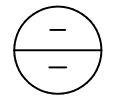
Scale  
1/20  
Drawing No. —  
Date — . . . .



Opening frame for door installation  
 (3-sided-frame)  
 St: □-100x100x2.3t  
 (prepared by customers)

Back-plate for fixing bracket should be set  
 for reinforcement (prepared by customers)  
 Thickness 7.0mm more L/Shown in profile sketch  
 (prepared by customers)

A-A' section



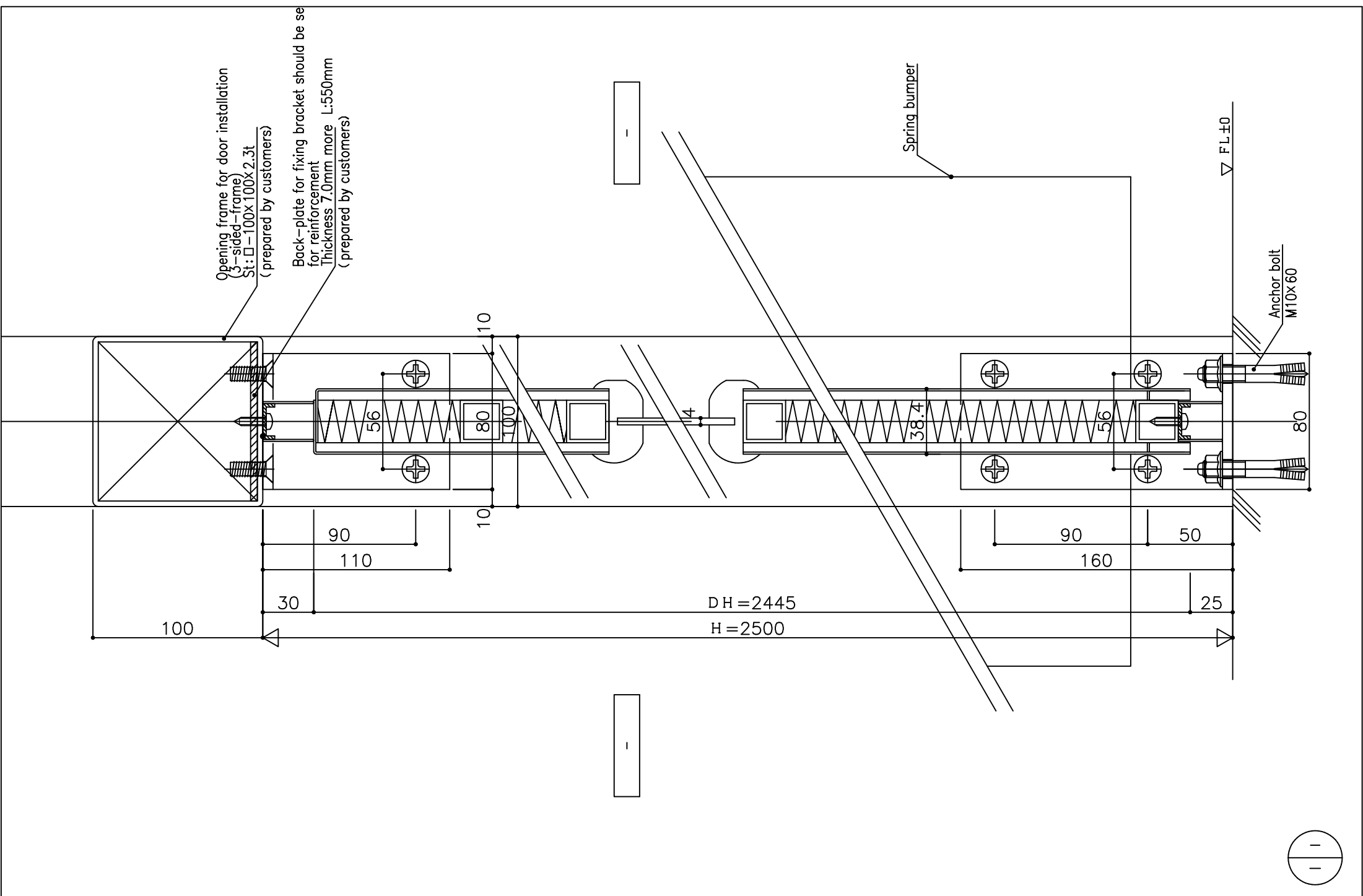
—	—
•	•
•	•
•	•
•	•

Drawing name  
 UNIFLOW SWING DOOR  
 SN-1 (double door)  
 cross section



1/2  
 /

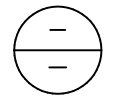
—
— • • • —

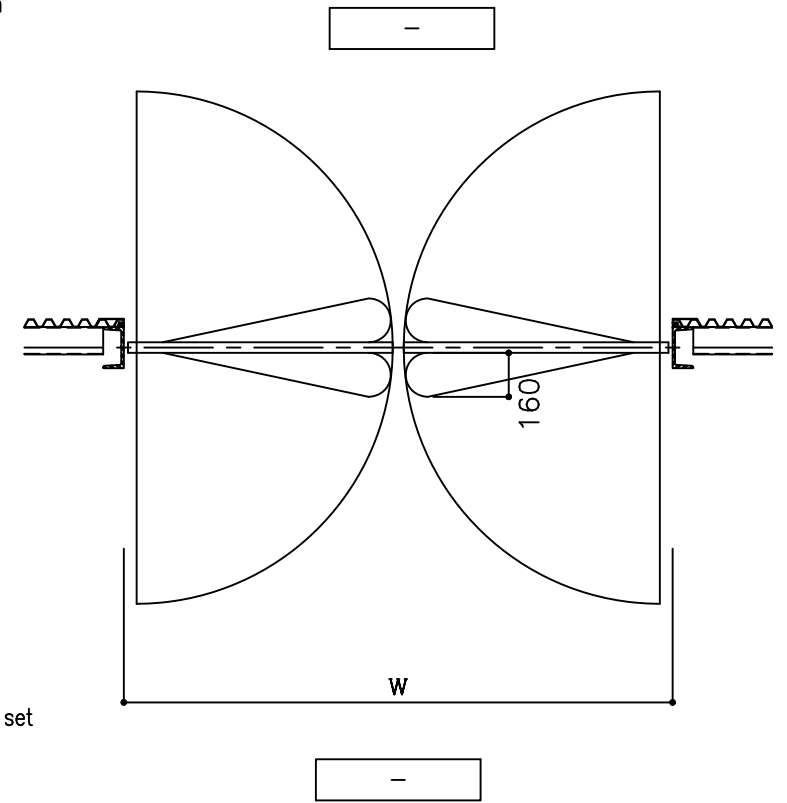
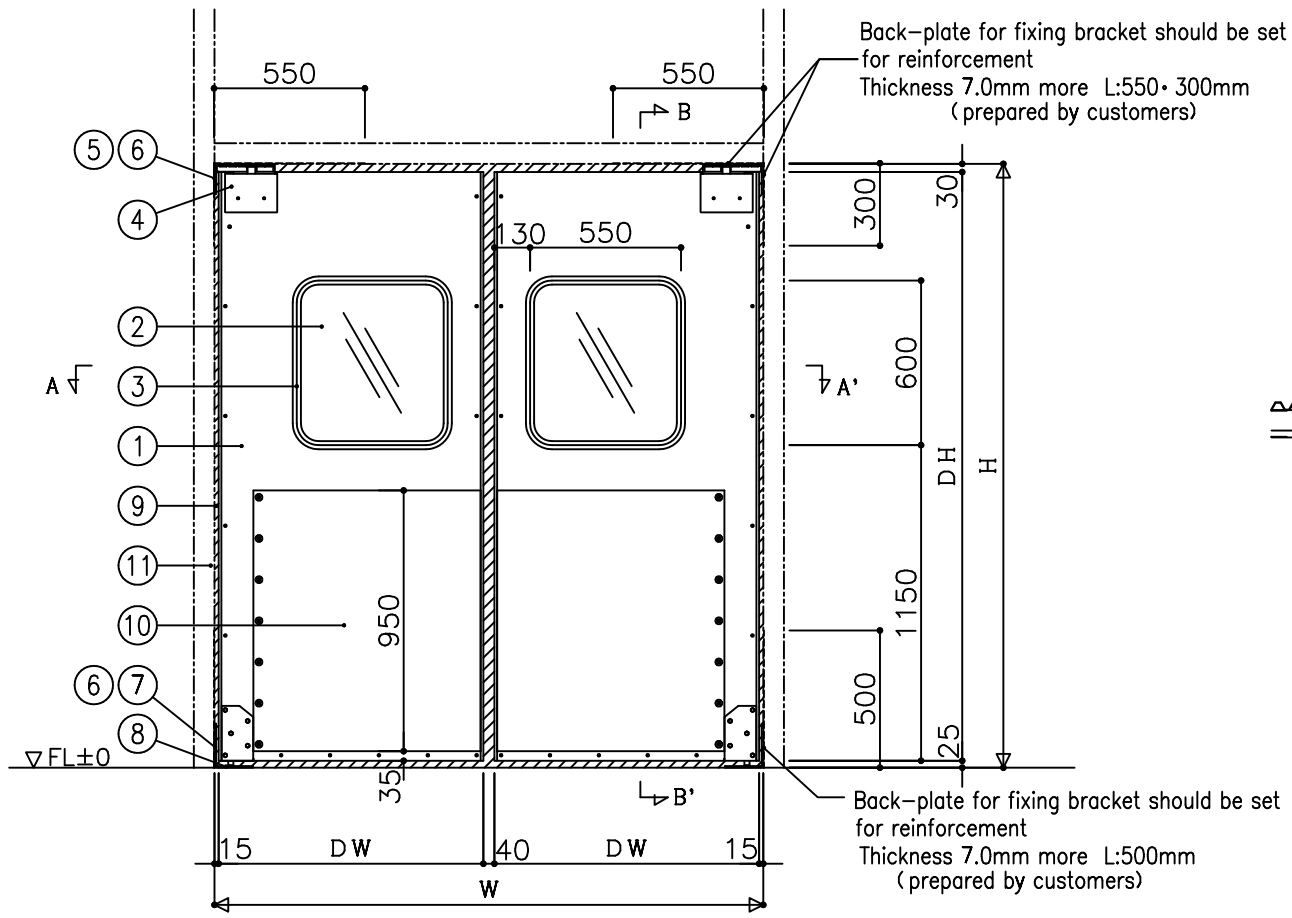


-	-
•	•
•	•
•	•
•	•



1/2	-
/	-





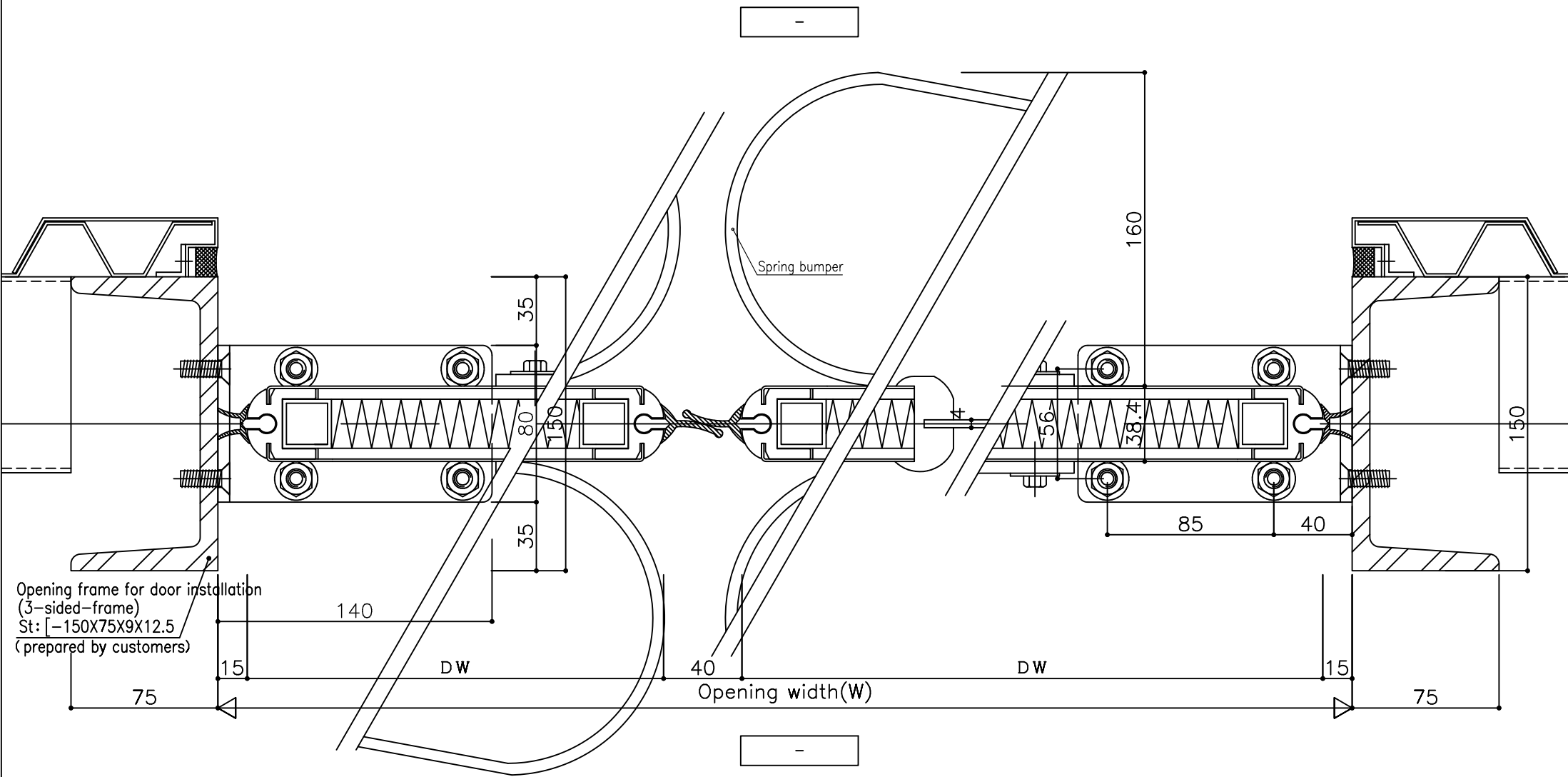
No.	Name	Material	Remark
1	Surface material	Stainless steel	thickness 1.2 mm
2	Window	Polycarbonate	color: transparent/thickness 4.0 mm
3	Window gasket	Synthetic rubber	color: black
4	Hinge cover	Stainless steel	125x90x25
5	Upper bracket in frame side	Steel SPC	Unichrome plating
6	Screw for bracket in frame side	Stainless steel	+flathead/M8x25
7	Lower bracket in frame side	Stainless steel	-
8	Screw for lower bracket in frame side	Stainless steel	+A flathead tapping6 x30
9	Gasket	PVC	color:black
10	Spring bumper	Resin(LDPE)	color: black (both side) H=950 D=160
11	Opening frame for door installation (3-sided-frame)	-	To the point of rust proof treatment is provided

Core of door・T hermal insulation foam (High best wood)  
Opening frame for door installation (3-sided-frame)  
and back plate for reinforcement  
should be prepared by customer.

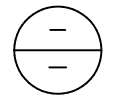
Possible dimensions for production

	Double door
Opening width (W)	2000 ≤ W ≤ 3000
Opening height (H)	2000 ≤ H ≤ 3000

Code	How many	Where to install
⊖	-	~
Type	SWING DOOR SN-1 (double door)	



A-A' section



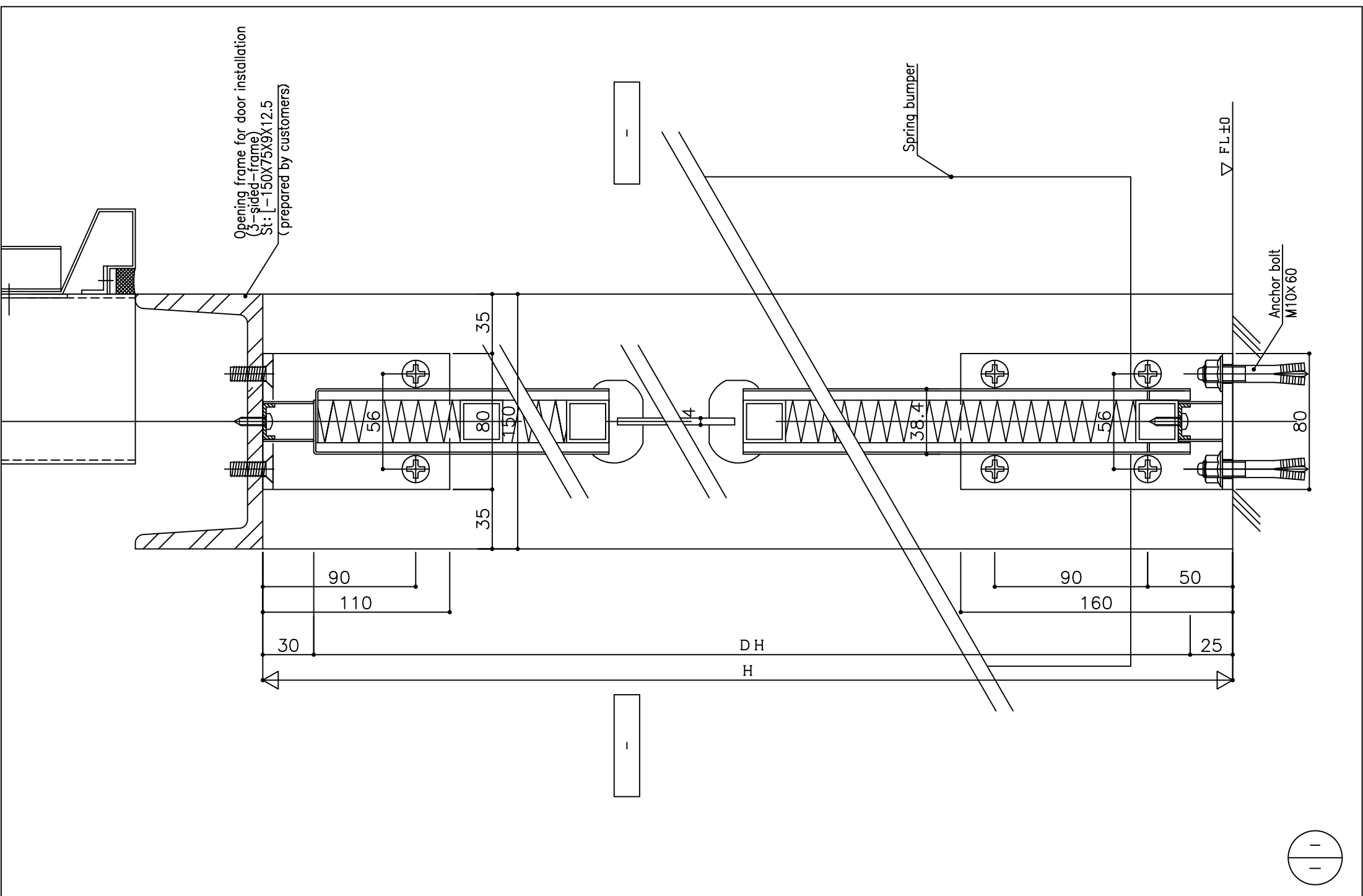
---	---
•••	---
•••	---
•••	---
•••	---

Drawing name  
UNIFLOW SWING DOOR  
SN-1 (double door)  
cross section



Scale	1/2	Drawing No.	---
	/	Date	•••••





—	—
•	—
•	—
•	—
•	—

—	—
—	—
—	—

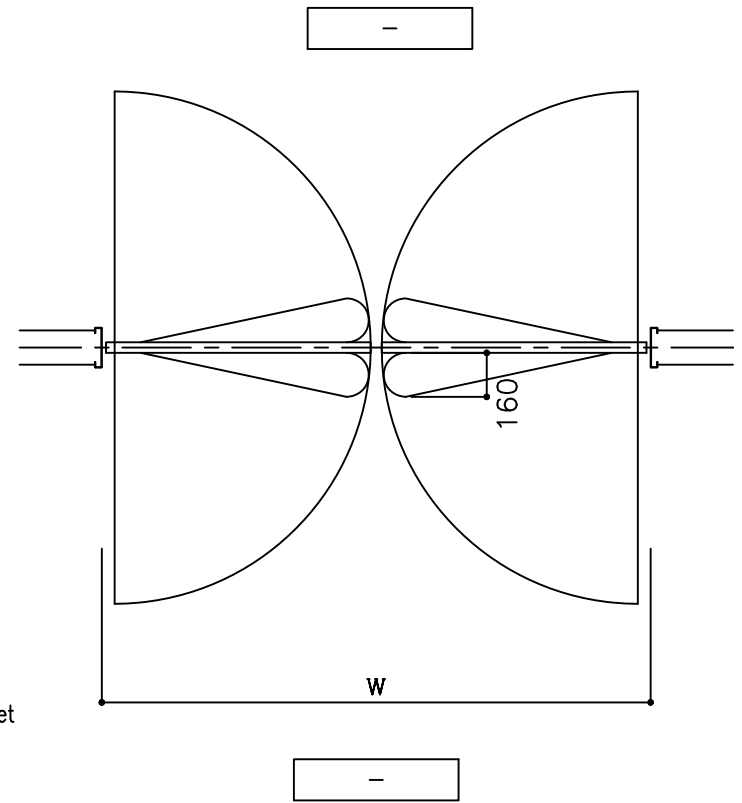
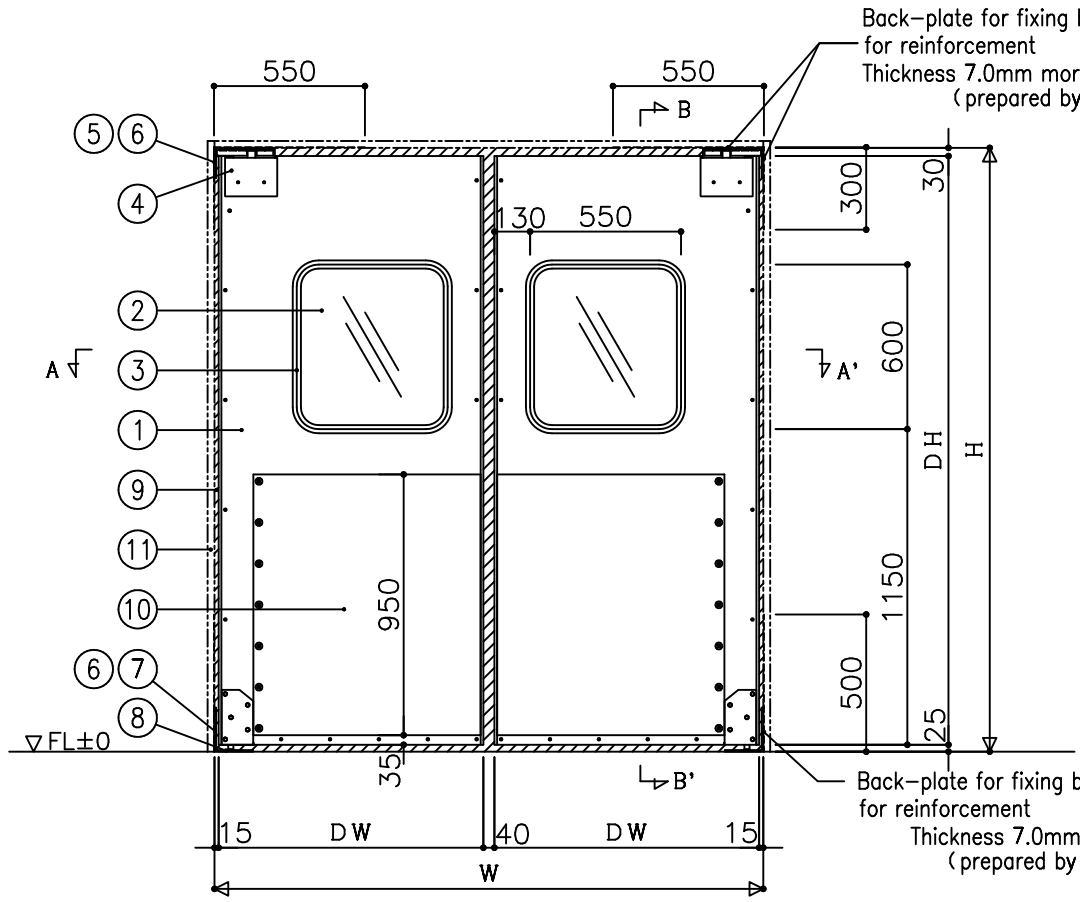
Drawing name  
 UNIFLOW SWING DOOR  
 SN-1  
 vertical section



—	—
—	—

Scale	1/2	Drawing No.	—
	/	Date	— . . . . .

Back-plate for fixing bracket should be set for reinforcement  
Thickness 7.0mm more L:550・300mm  
(prepared by customers)



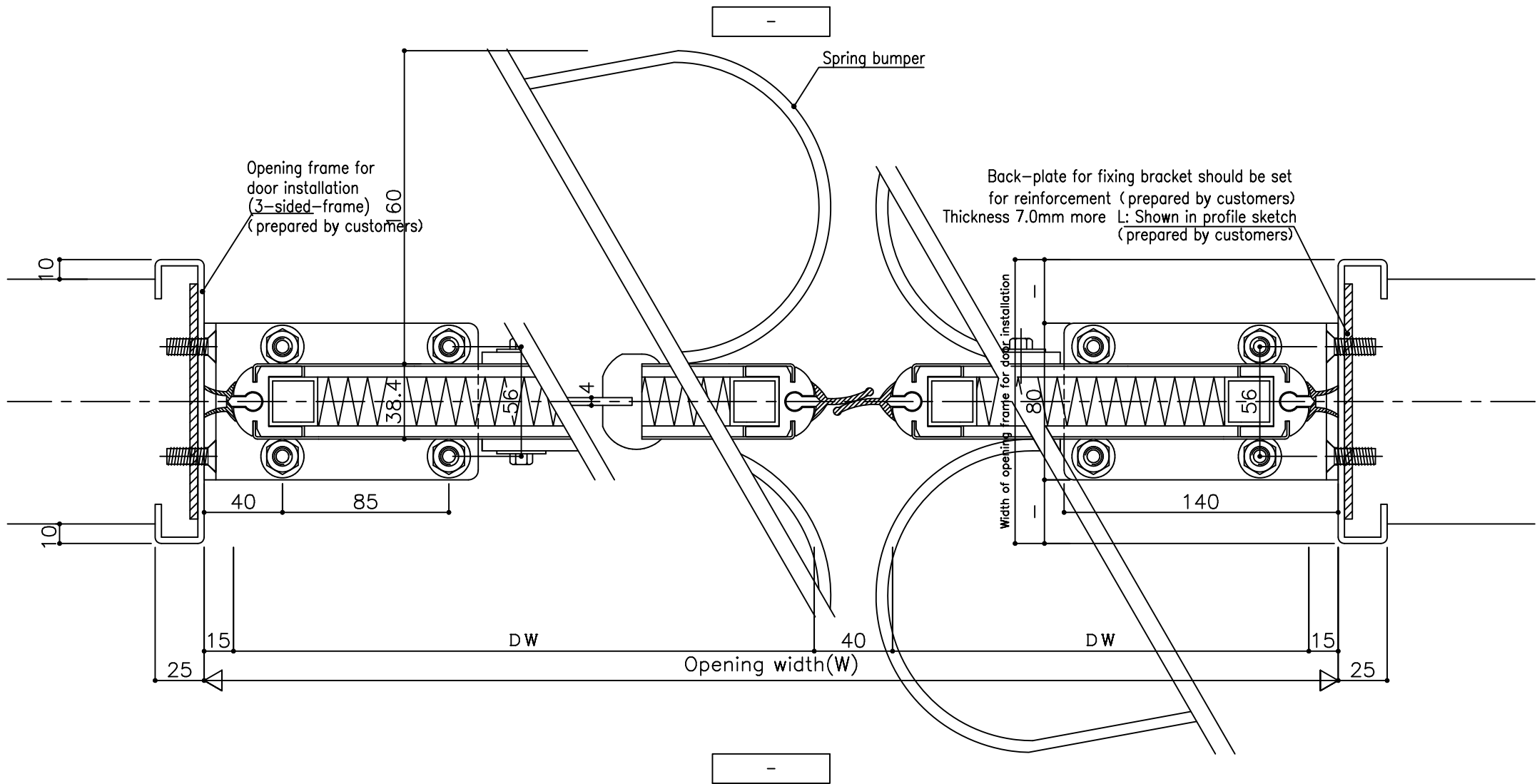
No.	Name	Material	Remark
1	Surface material	Stainless steel	thickness 1.2 mm
2	Window	Polycarbonate	color: transparent/thickness 4.0 mm
3	Window gasket	Synthetic rubber	color: black
4	Hinge cover	Stainless steel	125x90x25
5	Upper bracket in frame side	Steel SPC	Unichrome plating
6	Screw for bracket in frame side	Stainless steel	+flathead/M8x25
7	Lower bracket in frame side	Stainless steel	-
8	Screw for lower bracket in frame side	Stainless steel	+A flathead tapping6 x30
9	Gasket	PVC	color:black
10	Spring bumper	Resin(LDPE)	color: black (both side) H=950 D=160
11	Opening frame for door installation (3-sided-frame)	-	To the point of rust proof treatment is provided

Core of door・Thermal insulation foam (High best wood)  
Opening frame for door installation (3-sided-frame)  
and back plate for reinforcement  
should be prepared by customer.

Possible dimensions for production

	Double door
Opening width (W)	2000 ≤ W ≤ 3000
Opening height (H)	2000 ≤ H ≤ 3000

Code	How many	Where to install
⊖	-	~
Type	SWING DOOR SN-1 (double door)	



A-A' section

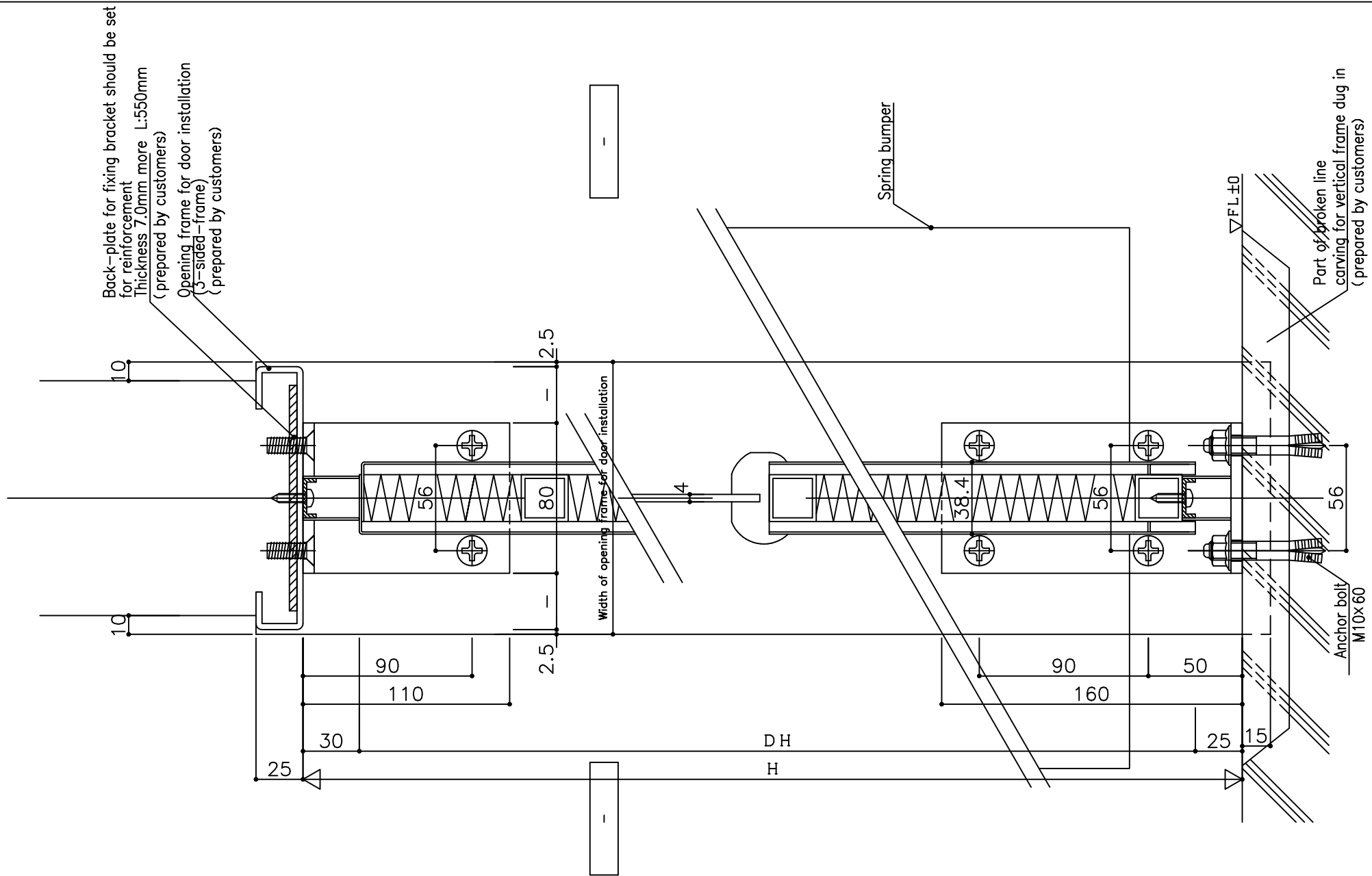


—	•	•	•	•	—
•	•	•	•	•	•
•	•	•	•	•	•
•	•	•	•	•	•

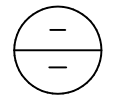
Drawing name  
UNIFLOW SWING DOOR  
SN-1 (double door)  
cross section



Scale 1/2	Drawing No. —
/	Date — • • • —



B-B' section

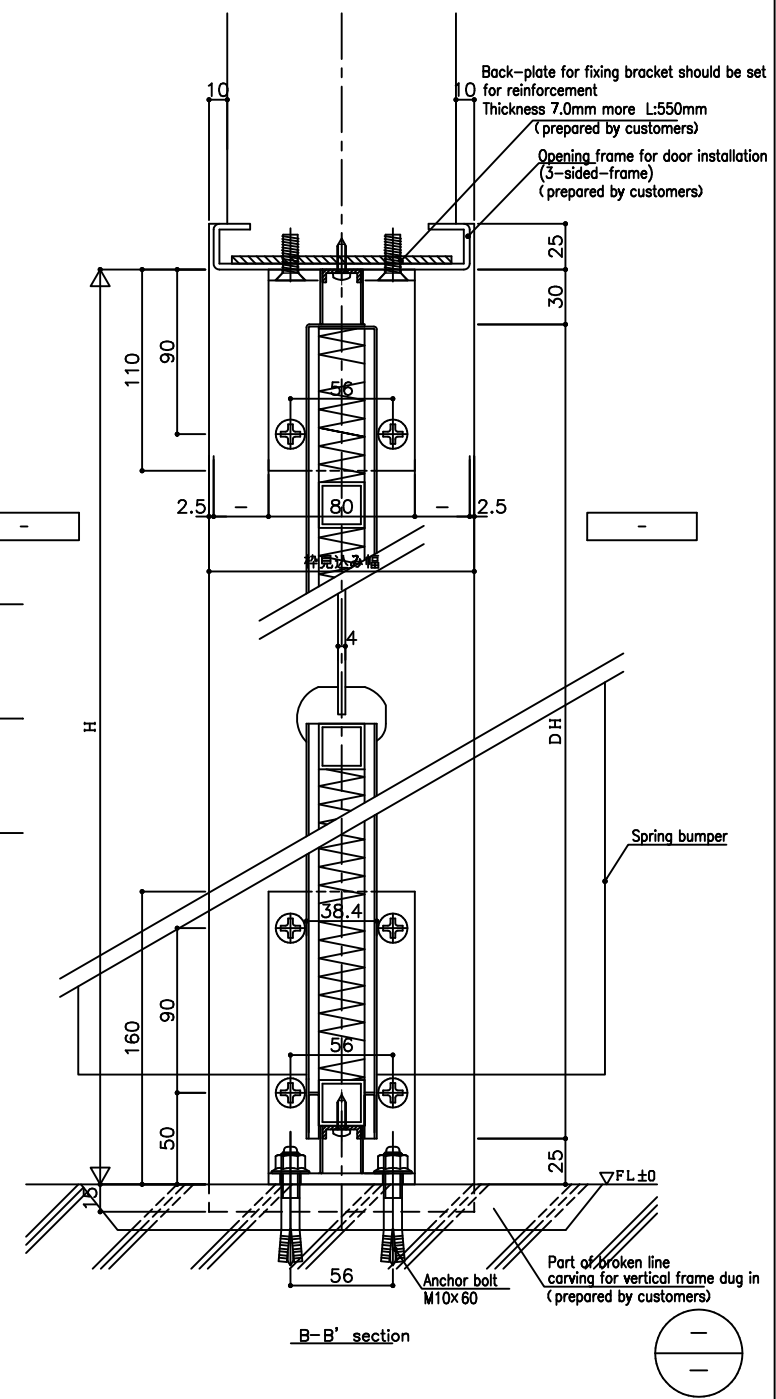
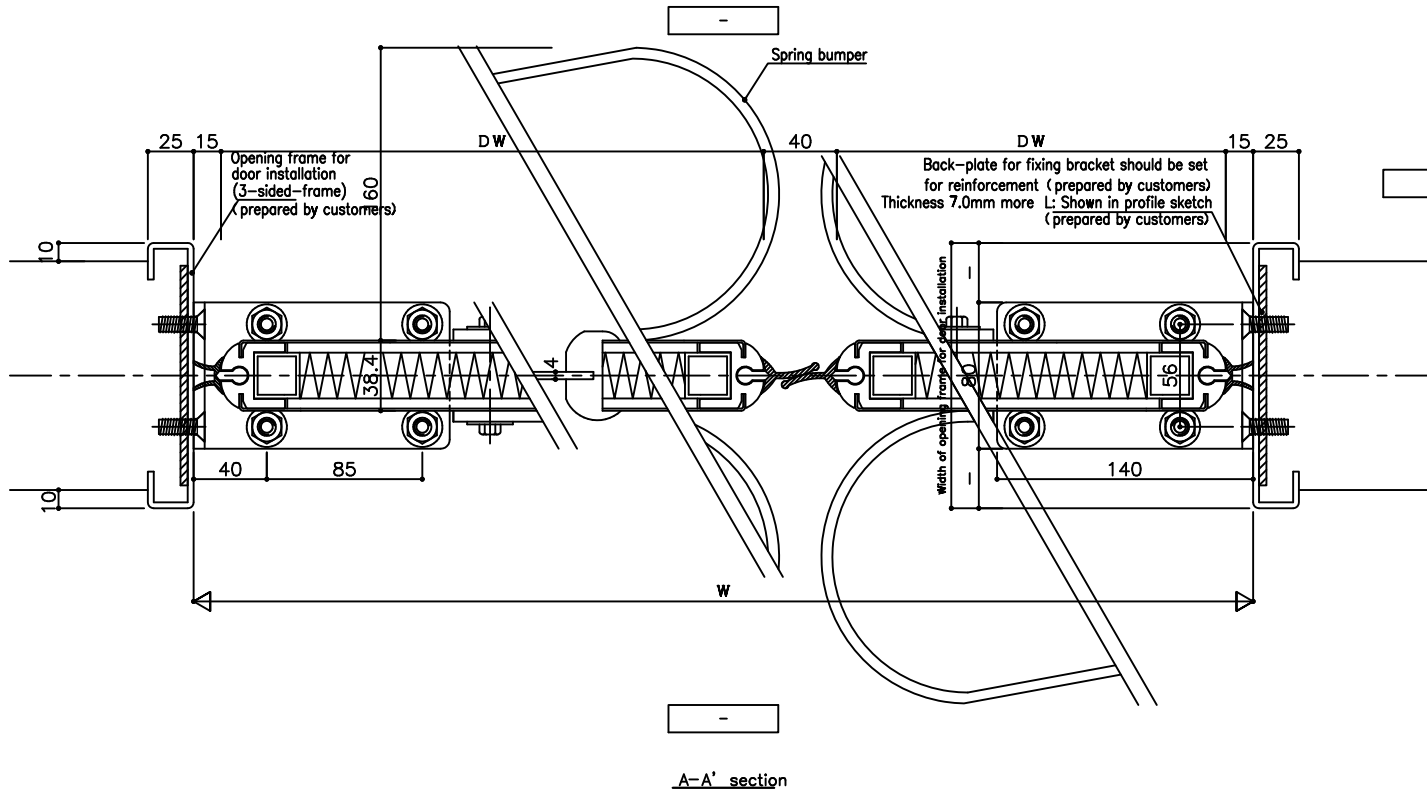


—	—
•	•
•	•
•	•
•	•

Drawing name  
UNIFLOW SWING DOOR  
SN-1  
vertical section



Scale	1/2	Drawing No.	—
	/	Date	— • • • —



—	○	○	○	—
○	○	○	○	—
○	○	○	○	—
○	○	○	○	—
○	○	○	○	—

Drawing name  
UNIFLOW SWING DOOR  
SN-1 (double door)  
vertical section / cross section



Scale	Drawing No.	—
1/3	Date	—
/		—