

HACCP compatible option

An insect-resistant orange sheet certainly repels insects, a high performance airtight gasket (option) can also enhance an insect-proof and a dust-proofing effect.

In addition, attaching a slope cover on a drum box or a control box makes it easier to confirm its contamination state. Apart from that, a stainless steel-made rail or a drum box, and baking coating finishing are available.



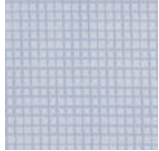
▲ Example of use: Slope top for drum box



▲ Example of use: Slope top for control box

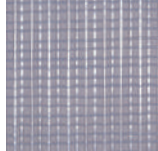
Sheet

[Standard]
(Standard specification for RB, RX excluding RB-1)



Transparent sheet (Flame-retardant finish)

[Antistatic Flame retardant] (RB-1)

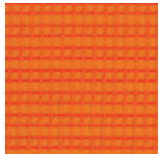


Transparent sheet (Antistatic flame-retardant finish) *Not available on RB-4Z

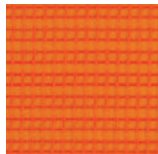
[Antistatic Flame retardant] (RA-2Es)



Ivory sheet (Explosion-proof finish)



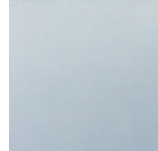
Insect-resistant orange sheet (Flame-retardant finish)



Insect-resistant orange sheet (Antistatic flame-retardant finish)

* The Fire defence Agency registration No.AE-13-1223

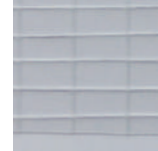
[Sheet option for window]



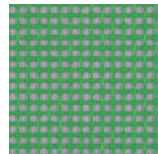
Clear *



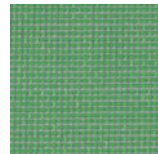
Clear orange *



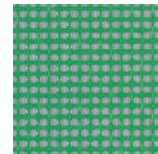
Flame-retardant clear



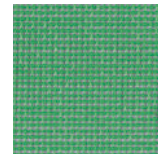
Light green1003 *



Light green1004*



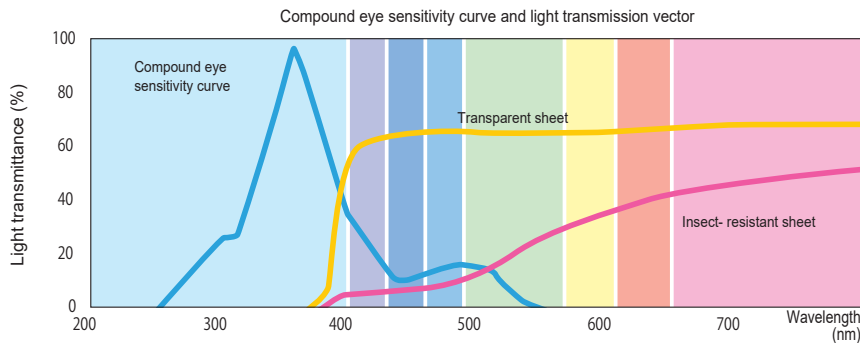
Dark green1003*



Dark green1004*

* A flame retardant product label is attached when a window is attached to a flame retardant sheet.

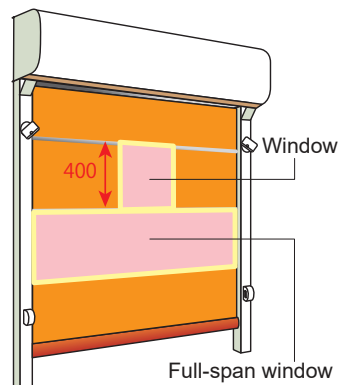
Insect-resistant effect



Cutting a wavelength zone of around 350nm, to which insects are most responsive, thereby prevents their entry.

Sheet window

Attaching a sheet window enables to see a person or a forklift at an opposite side in which can avoid collision accident etc. Available window options are Clear, Insect-resistant clear orange, Mesh, Flame-retardant clear.



	Window			Full-span window	
	Maximum width	Minimum width	Height	W dth	Height
RB-1	W-500	500	400	W+110	Maximum height set for each segment
RB-1Ta					
RX-2					
RX-3					
RB-4Z	W-800			—	—
RA-2Es	W-500			—	—

* Windows that can be mounted are 1 to 3 windows for a single s or a full-span window. (The number of windows varies depending on the width of a sheet.)

* Window mounting positions may be located on the first, second third, and fourth segments.

* Mesh window does not comply with a full-span window.

* For RB-1, if the opening width is less than 900, the maximum window is W-300.

* The flame retardant transparent type window for the RA-2Es become bleached over time due to deterioration.

● Sensors

For a small-size opening, that allows people or trolleys to pass through

Infrared sensor OA-203C*

External dimension: W221×H63×D29.9mm
 Mountable height (from FL) : 2~3.5m
 Static detection : 2, 15, 180 sec / Infinity
 Power supply : AC/DC12~30V
 Mountable model :
 RB-1, RB-1Ta, RX-2, RX-3, RB-4Z



Infrared sensor SHA-3200

External dimension: W210×H59×D28.5mm
 Mountable height (from FL): 2~3.2m
 Static detection : 2, 10, 60 sec / Infinity
 Power supply : AC / DC24V
 Mountable model:
 RB-1, RB-1Ta, RX-2, RX-3, RB-4Z



For a small-size to medium-size opening, with a wider infrared radiation area

Infrared sensor OA-4700S

External dimension : W267×H62×D45mm
 Mountable height (from FL) : 2.5~4.7m
 Static detection : 260 sec / 10 min / Infinity,
 Power supply : AC/DC12~24V
 Mountable model : RB-1, RB-1Ta, RX-2, RX-3, RB-4Z
 Remarks : Rainproof cover available (sold separately)



Infrared sensor SHA-4701

External dimension : W265×H61×D37.5mm
 Mountable height (from FL) : 2.0~4.7m
 Static detection : [1, 2, 3 Row] 2, 10, 30 sec
 / Infinity [4, 5 Row] 2, 10 sec
 Power supply : AC / DC12~24V
 Mountable model : RB-1, RB-1Ta, RX-2, RX-3, RB-4Z
 Remarks : Rainproof cover available (sold separately)



For a small-size to medium-size opening, with high-intensity radiation area

Intelligent sensor II OAM-EXPLORER J

External dimension : W207×H167.5×D118mm
 Mountable height (from FL) : 2.0~6.2m (An operation confirmation is required if detecting a person at more than H5.2M.)
 Static detection : 2, 10, 30 sec / 1, 3, 10 min / Infinity
 Power supply : AC / DC12~24V
 Mountable model : RB-1, RB-1Ta, RX-2, RX-3, RB-4Z
 Remarks : Crossing canceling function, Direction discriminating function, Infinite function in plural areas, Remote control application setting



Infrared sensor SHA-6502

External dimension : W321×H101.8×D90.5mm
 Mountable height (from FL) : 2.0~6.5m
 Static detection : 2, 10, 30 sec / Infinity
 Power supply : AC / DC12~24V
 Mountable model : RB-1, RB-1Ta, RX-2, RX-3, RB-4Z
 Remarks : Direction detecting function, traverse cancel function, rainproof construction, (separately sold), remote control



Detecting just a vehicle is possible, durable against natural environment.

Wide detection area, adjustable in length and width separately with increments of 10cm.

FALCON / FALCON XL

External dimension : W103×H97×D160mm
 Mountable height (from FL) : 2~3.5m (FALCON XL)
 3.5~7m (FALCON)
 Detection system: Microwave Doppler system (moving body detection)
 Power supply : AC / DC12~24V
 Mountable model : RB-1, RB-1Ta, RX-2, RX-3, RB-4Z
 (FALCON is only available for RX-2, RX-3, RB-4Z)
 Remarks : Water repellence (IP65 level), a remote controller is available (sold separately)



Laser scanner J

External dimension: W124.8×H83.7×D92.5mm
 Mountable height (from FL): 0.5~9.9m
 Detection system: Laser (stationary detection)
 Power supply : DC24V
 Mountable model : RB-1, RB-1Ta, RX-2, RX-3, RB-4Z
 Notes: 2 detection area setting, remote control setting



● Switches

	Wireless remote control (1-key type / 3-key type)	Pull Switch	Pull Switch (for RA-2Es)	Single pushbutton switch	Explosion-proof single pushbutton switch
Type	Receiver: RX13-1143 Transmitter: TX20-1011UF	—	—	WBSTT2210N	SJW4200
External dimension	W36×H80×D12.3 (Transmitter)	W140×H154×D33 (Main body portion)	W140×H154×D33 (Main body portion)	W60×H98×D47.5	W82×H134×D81
Power supply	DC12~24V	—	—	—	—
Power consumption	Below 2.4W	—	—	—	—
Mountable model	RB-1, RB-1Ta, RX-2, RX-3, RB-4Z	RB-1, RB-1Ta, RX-2, RX-3, RB-4Z	RA-2Es	RB-1, RB-1Ta, RX-2, RX-3, RB-4Z	RA-2Es
Remarks	Possible to use 100 transmitter units in each group, maximum 200 units for one receiver	—	—	Explosion-proof & jet-proof IP65	Explosion-proof grade d2G4

● Other options

- Guard pole
- Revolving light
(Red, Yellow, Green, Blue)
- Triple pushbutton switch
- Photoelectric sensor
(phototransmitting / photoreceiving type)
- Buzzer
- Countdown indicator
(Only for RX-series)

* Specifications are subject to change without notice for product improvement.