

Range of possible opening

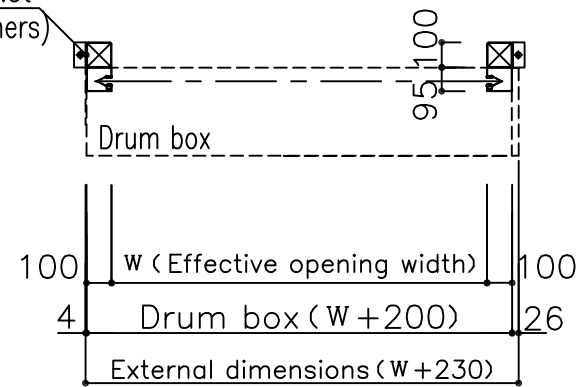
W (Effective opening width)	800 ~ 3000
H (Effective opening height)	900 ~ 3000

Drum box	Colored steel plate	Color: ivory
Sheet	Polyester yarn encapsulated vinyl sheet	Color: Transparent/ Insect-proof orange

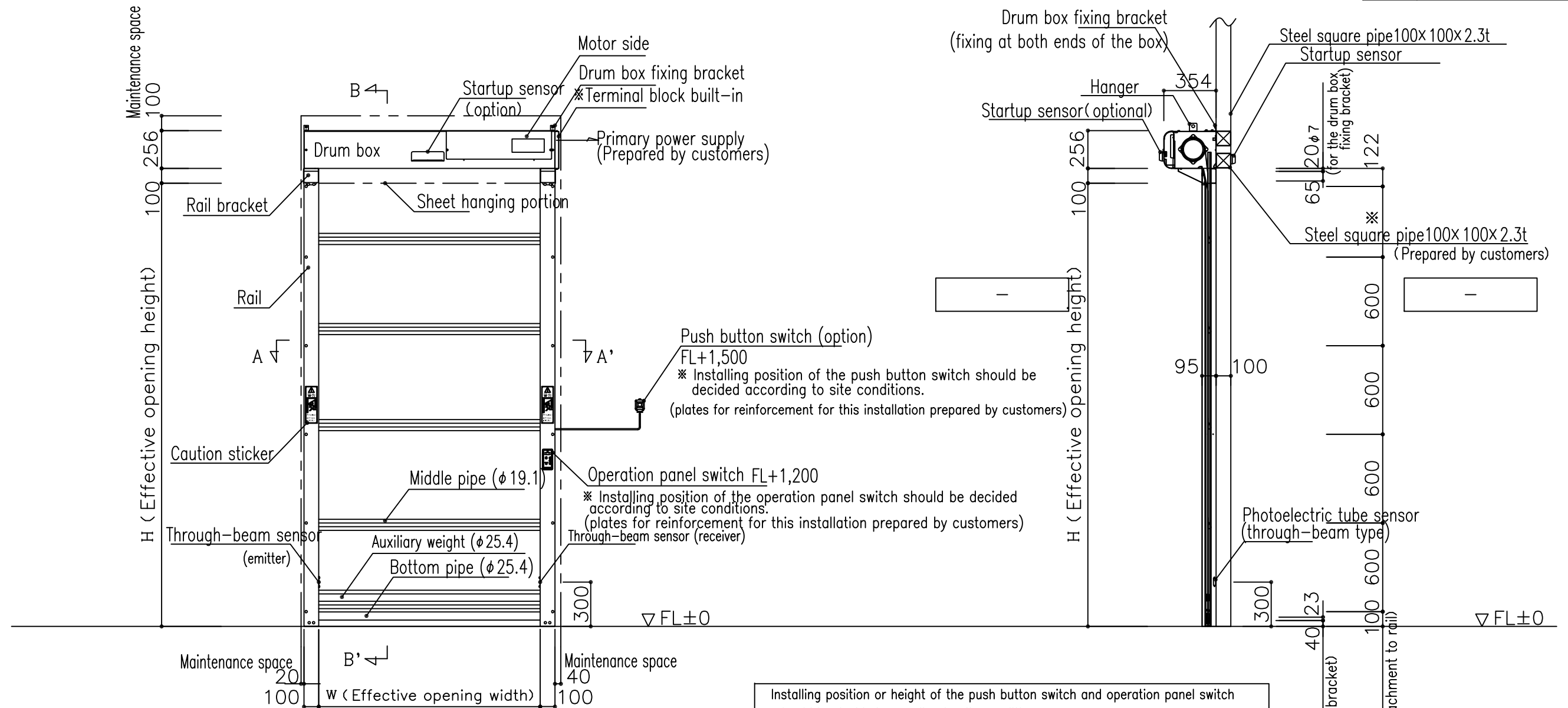
Components		Q'ty		
		Front side	Back side	Total
Safety sensor	Photoelectric tube sensor (through-beam type)	-	1	1
Startup sensor	(option)	-	-	-
Opening/closing switch	Operation panel switch	1	-	1
	Push button switch (option)	-	-	-
	Pull switch (option)	-	-	-
Mortor	Rated power 400W	-	-	-
Control board	Single phase AC200V, below 6A	1	-	1

Note: If the Smoother RB-1 is installed in between walls (ex. at passage), it needs to have the maintenance space of, for safety sake, 100mm more in total in left and right sides together.

St角パイプ100x100x2.3t  
(Prepared by customers)

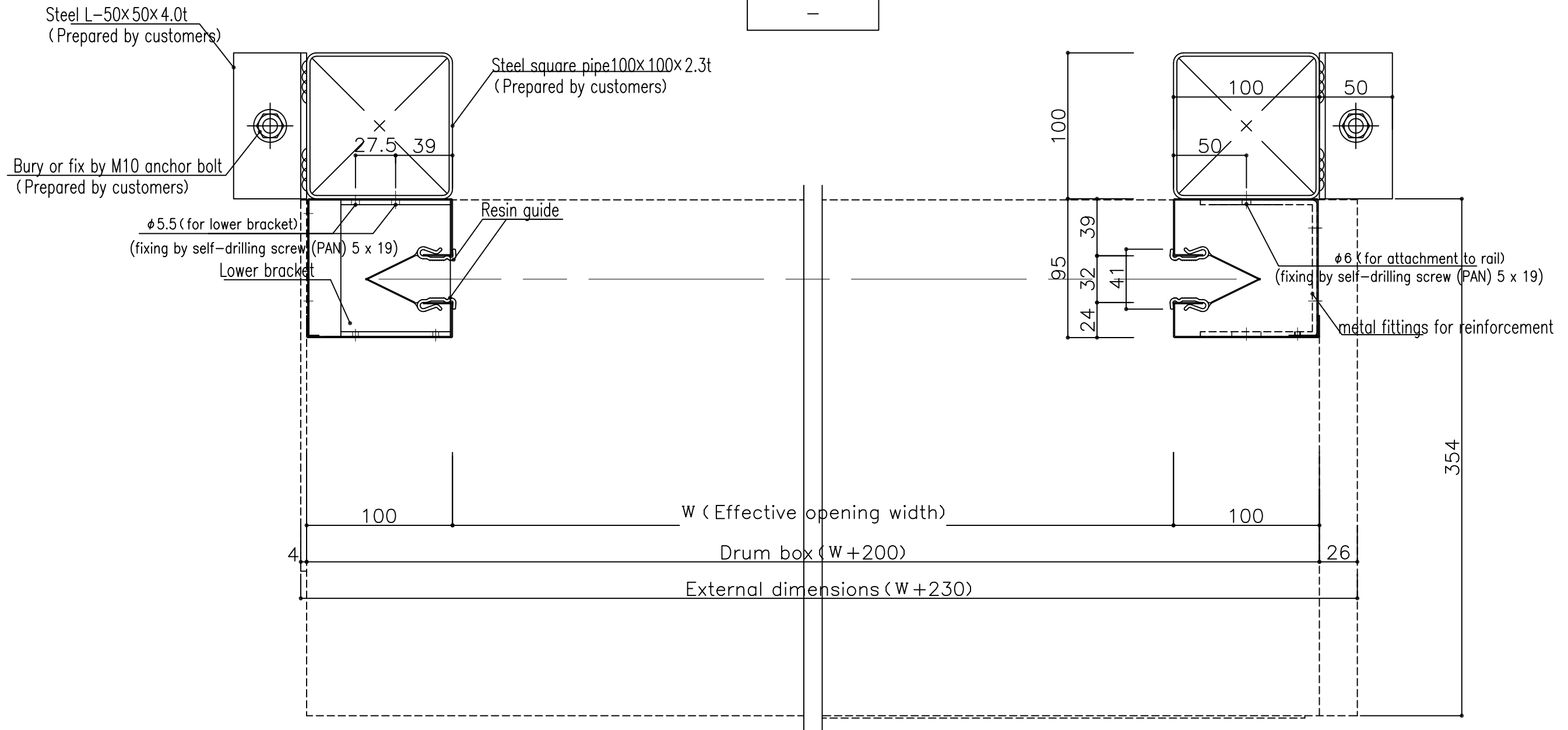


Code	How many	Where to install
⊖	-	~
Type	High-speed Roll-up Door Smoother RB-1	



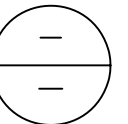
Installing position or height of the push button switch and operation panel switch should be decided according to site conditions.  
Appropriate model of start up sensors should be selected according to site conditions.



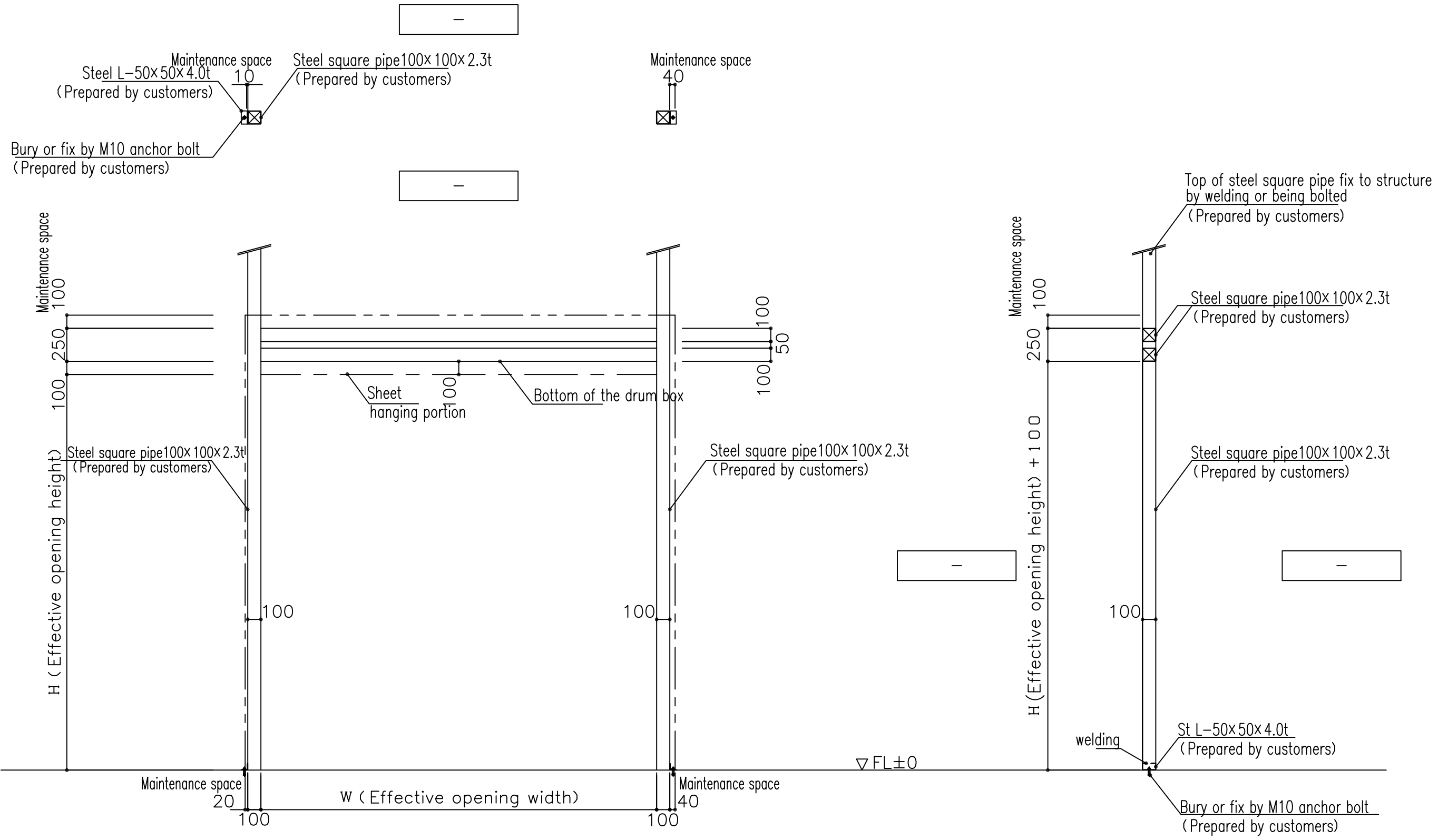


\* Construction of bases for installation should be discussed at each site according to the site conditions.

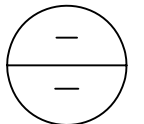
A-A' Section



•				High-speed Roll-up Door Smoother RB-1 cross section	株式会社ユニジョル			Scale 1/3	
•								Drawing No. 03	
•								Date - . - . -	



Treatment of the installation base must be determined through consultation at each site.



•	•			High-speed Roll-up Door Smoother RB-1 Bases for installation				Scale 1/3			
•	•										Drawing No. 05
•	•										Date - . - .
•	•										