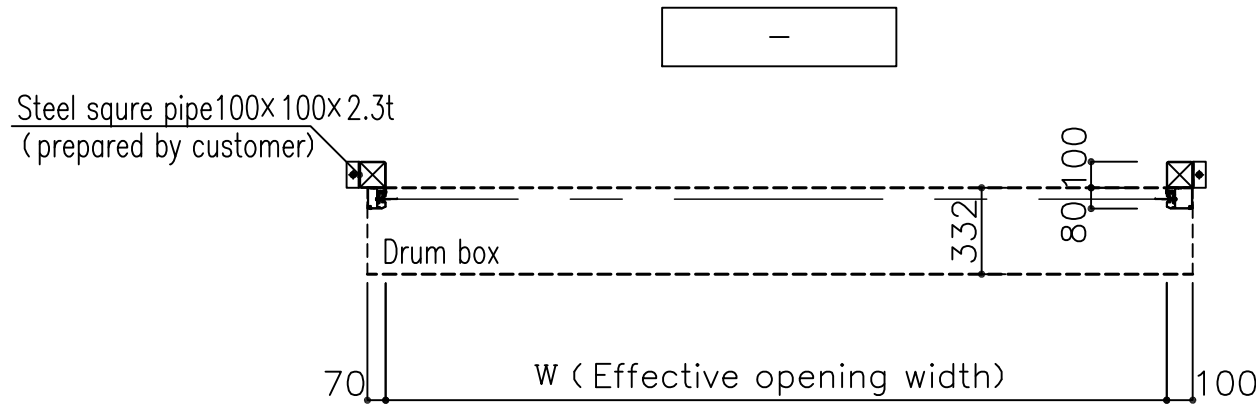


JETTER JT-1 Range of possible opening

W (Effective opening width)	900 ~ 3000
H (Effective opening height)	900 ~ 3000

Material type for Drum box	Colored steel plate	Color:Ivory
Sheet	Polyester yarn encapsuled vinyl sheet	Color:Transparent Insect-proof Orange

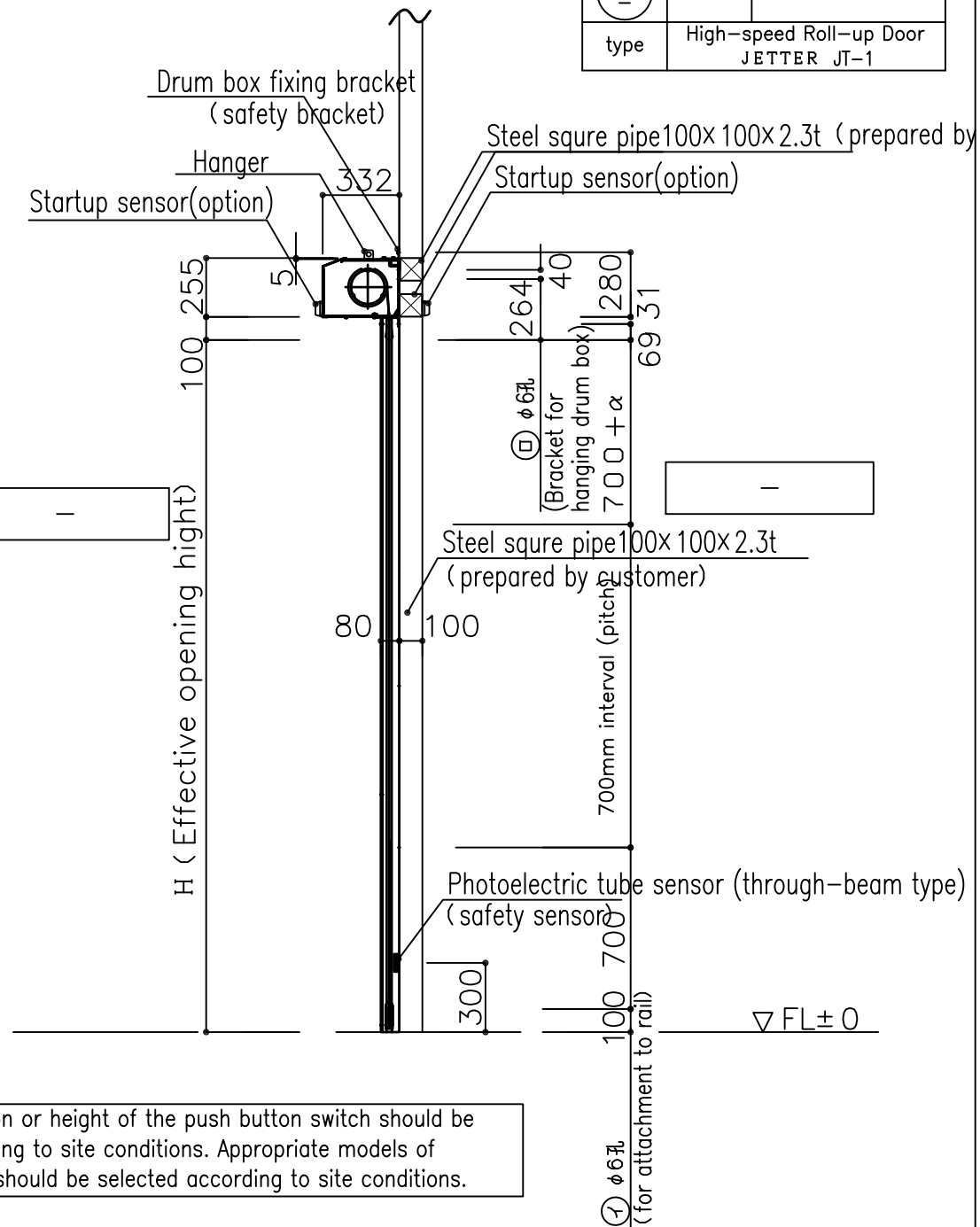
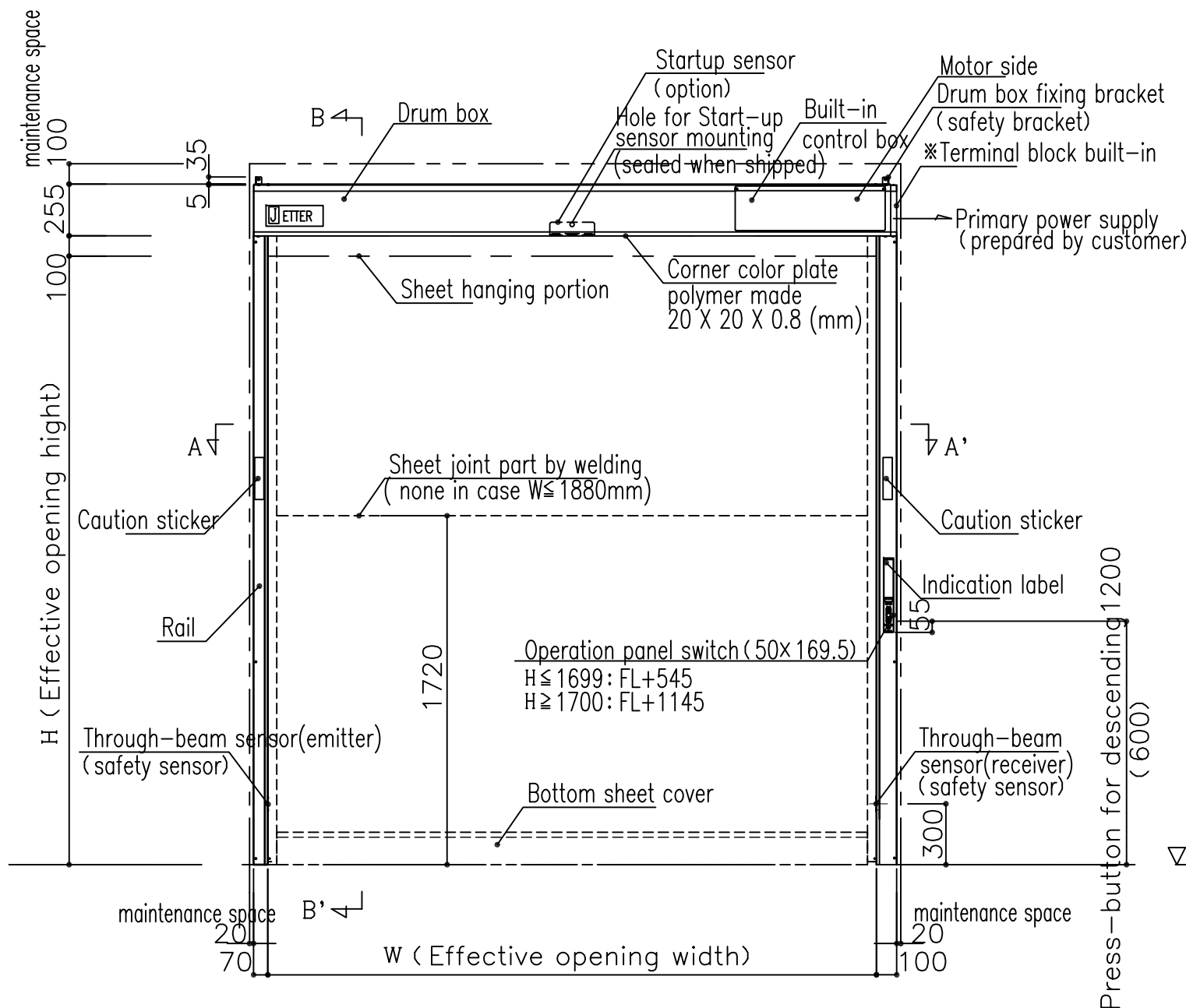


\* Only right side hand Motor specification available.  
100mm wide right side and 70mm wide left side rails introduced.

Components		Q'ty		
		Front side	Back side	Total
Safety sensor	Photoelectric tube sensor (through-beam type)	-	1	1
Startup sensor	- (option)	-	-	-
Opening/ Closing Switch	Operation panel switch	1	-	1
	Push button switch (option)	-	-	-
	Pull switch (option)	-	-	-
Motor	Rated power 400W	-	-	-
Control board	Single phase AC200V below 5A	1	-	1

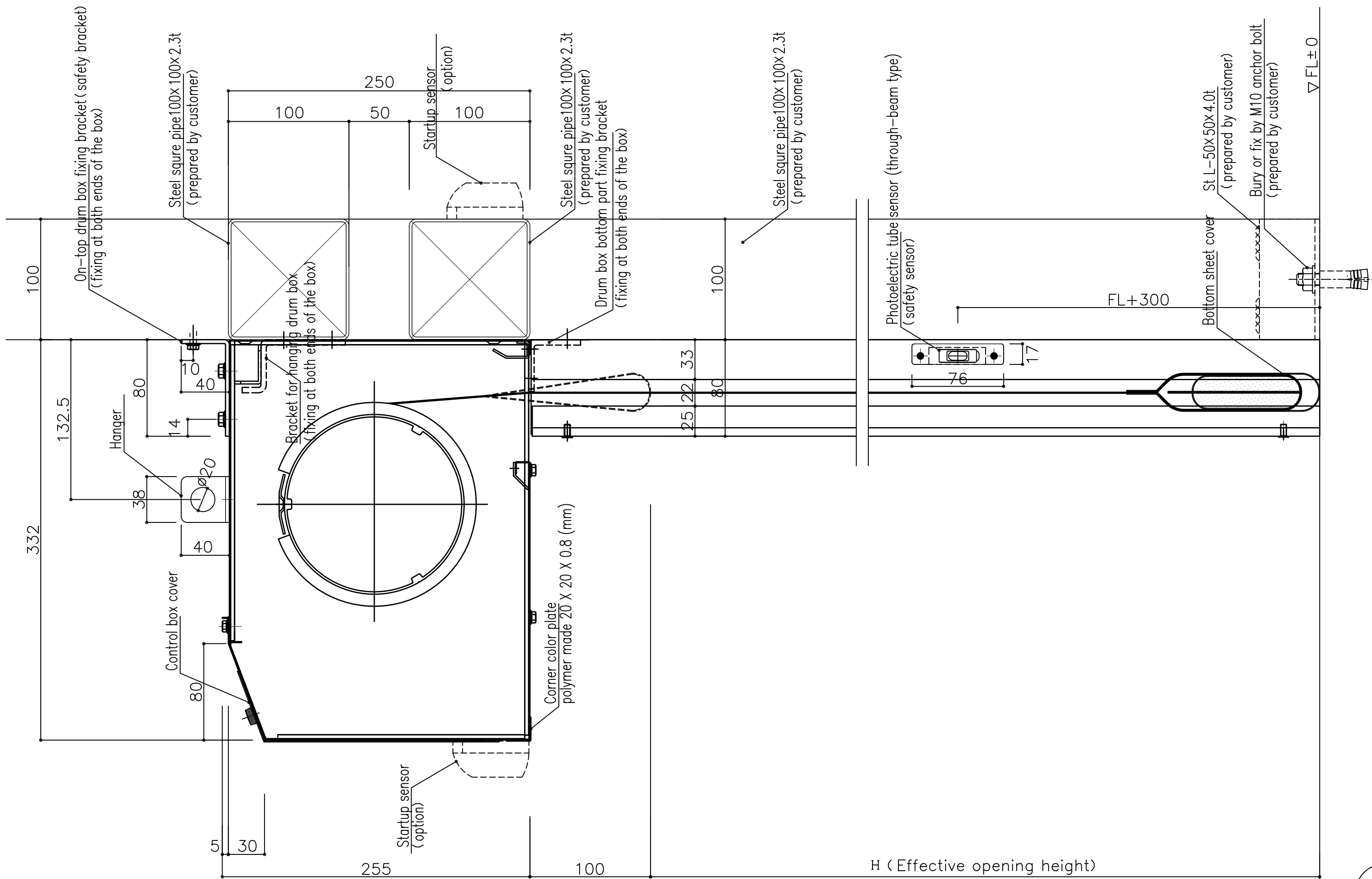
α = less than 150

code	Quantity	Location of installation
⊕	-	~
type	High-speed Roll-up Door JETTER JT-1	



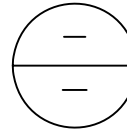
Installing position or height of the push button switch should be decided according to site conditions. Appropriate models of startup sensor should be selected according to site conditions.





A-A' section

※Construction of bases for installation should be discussed at each site according to the site conditions.



High-speed Roll-up Door  
JETTER JT-1  
vertical section



scale  
1/3

Drawing No 03  
Date - . - . -

