



Hinged door (Normal Swing Door)

The door can be customized to match the environment in response to each user.

※Option: Long window



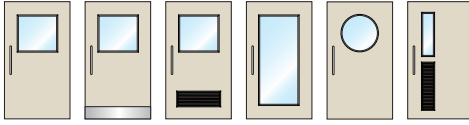
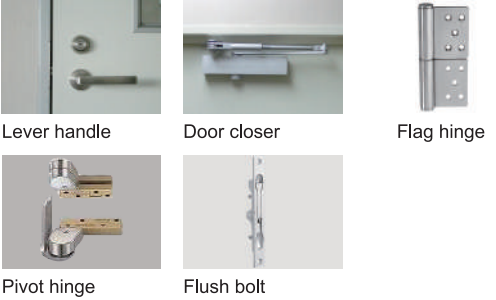

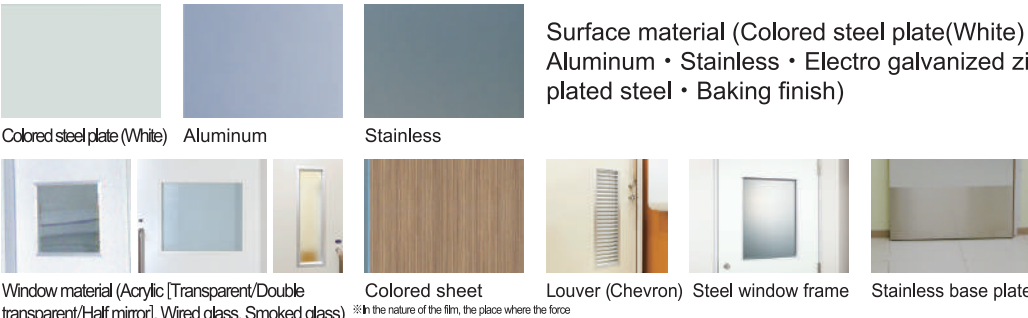


Sliding door

Hanger type with a flat floor enables smooth opening and closing. It can cope with aging population and barrier-free.

※Option: Louver · Long window

- This door can be easily used in any situation.
- We will take care of drawing, installation and delivery adjustment.

	Hinged door (Normal Swing Door)	Sliding door
Standard specification (Common)	 Surface material: Colored steel plate (Ivory) 0.6/Door thickness:39mm Core material: Paper core/Frame: Steel (Anticorrosion gray paint 1.6)	
Variation ※	 General type/Airtightness/Fire preventive facility (Example of specifications)	 Airtightness/Fire preventive facility (Authorized product/Example of specifications) /Automatic engine specification
Parts (Standard equipment for a hinged door, Option for a sliding door)		
Option (Common)	Surface material (Colored steel plate(White) · Aluminum · Stainless · Electro galvanized zinc plated steel · Baking finish)	
		

*Please contact our sales staff to ask in detail of door spec.

LIGHT STEEL DOOR

[Hinged Door (Normal Swing Door) / Sliding Door]



Installation examples



Hinged door (long window with louver, auto-hinge)



Sliding door (louver, base plate, indication lock)

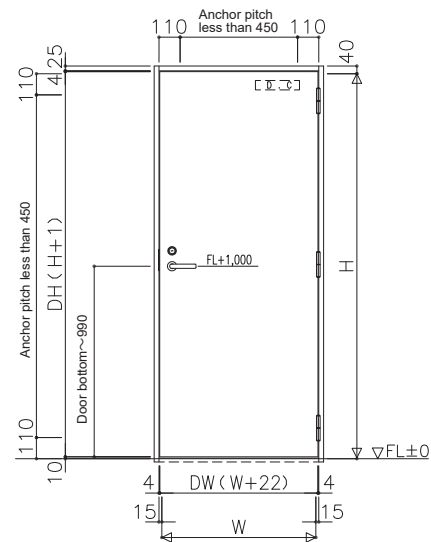


Sliding door (colored sheet is pasted, custom-made handle)

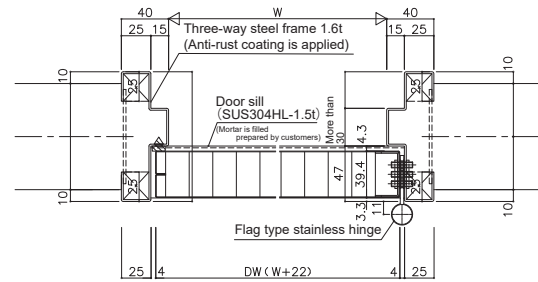
Hinged Door (Normal Swing Door)

Manufacturing range of a general type (W) Single leaf 600~1200 / Master-slave opening type less than 900~2400 / Double leaves 1200~2400 x (H) 1800~2300
 *SUS specification (W) Single leaf 600~1000 / Master-slave opening type less than 900~2000 / Double leaves 1200~2000 x (H) 1800~2300
 ※Please feel free to contact us for other specifications.

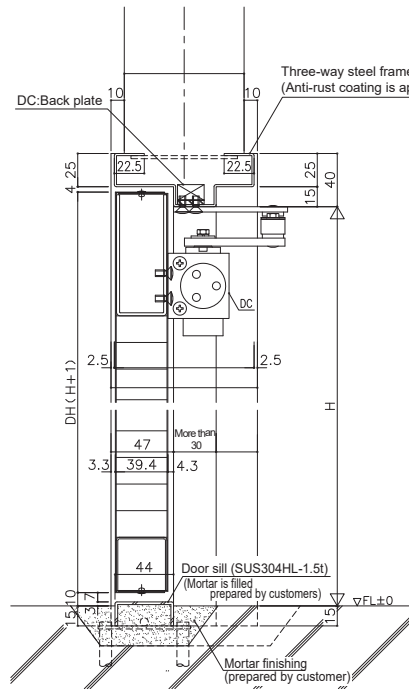
[Figure] Single leaf (Right Hinge /Open to right)



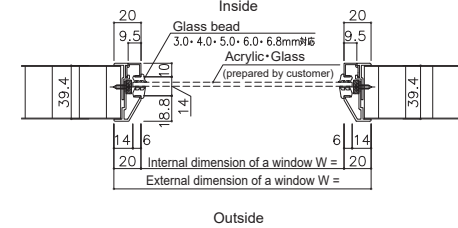
[Cross section] Single leaf (Right Hinge /Open to right) (mm)



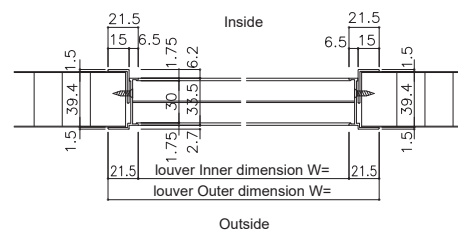
[Vertical section] Single leaf (Right Hinge /Open to right)



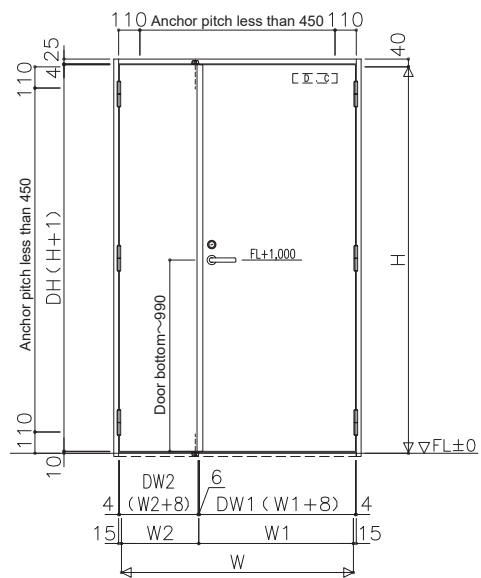
Detailed cross section of window (Option)



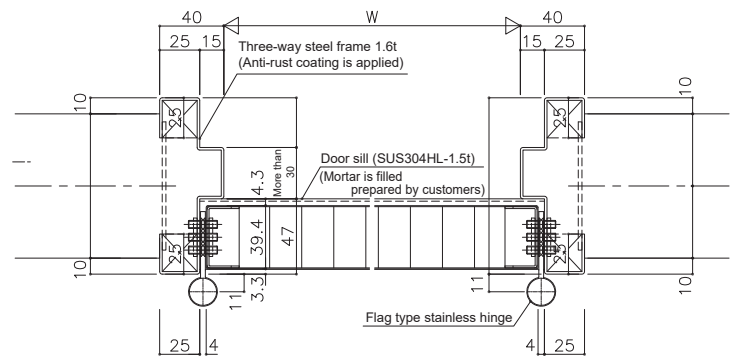
Detailed cross section of louver (Option)



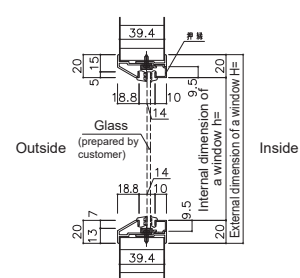
[Figure] Master-slave opening (Right Hinge /Open to right)



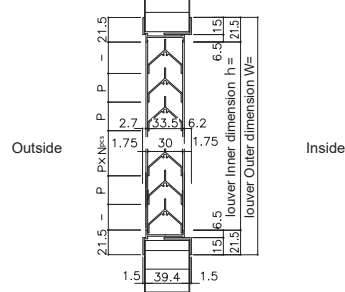
[Cross section] Master-slave opening (Right Hinge /Open to right)



Detailed cross section of window (Option)



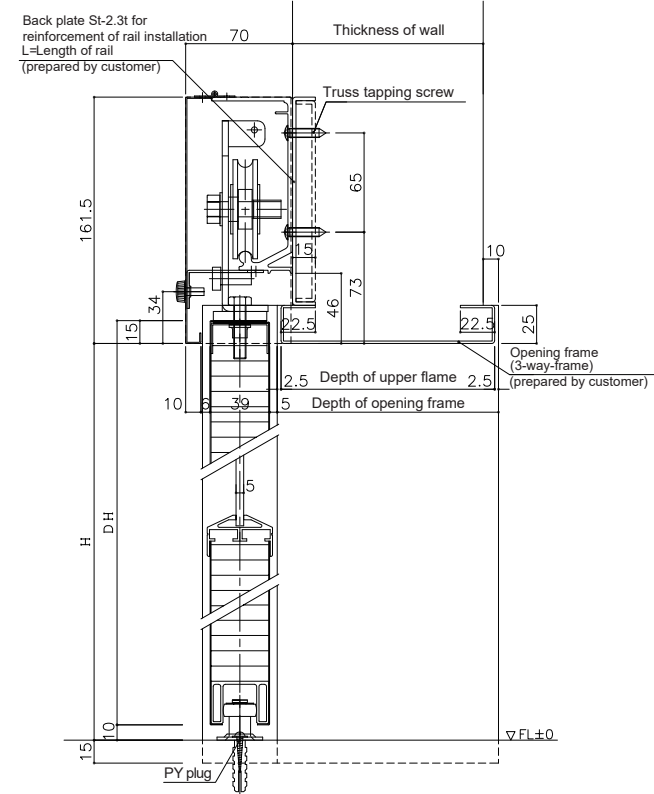
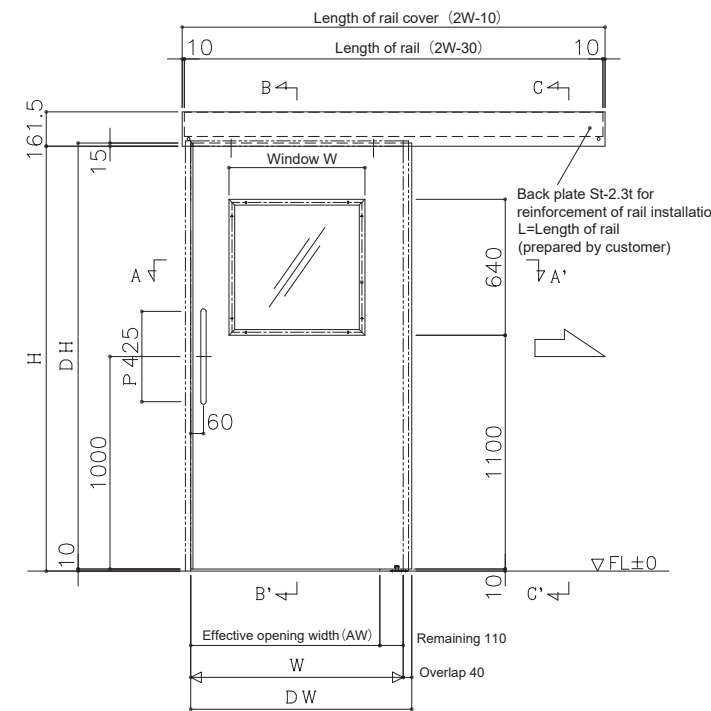
Detailed cross section of louver (Option)



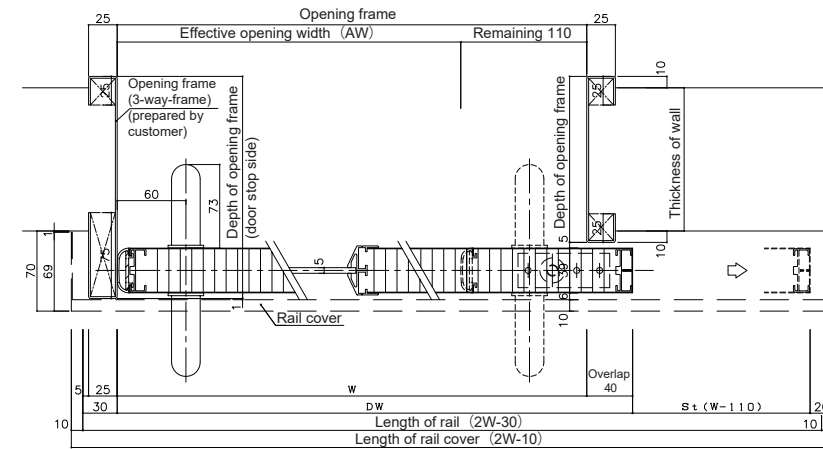
Sliding door

Manufacturing range (AW) Single leaf 600~1500 / Double leaves 1200~3000 x (H) 1100~2500
 Standard window W340,640,940 x H640 (Window W is depending on an effective opening W.)
 Unopened space 110 ※For external standard type (SR). Please feel free to contact us for other specifications.

[Figure] Single leaf sliding door (Open to right) [Vertical section] Single leaf / Double leaves (mm)

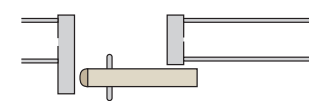


[Cross section] Single leaf (Open to right)

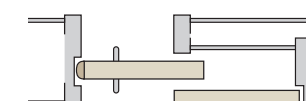


Settlement structure

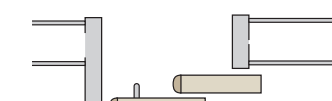
External (Single sliding door)



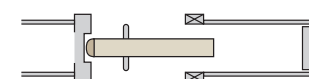
One side with door pocket



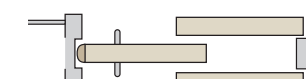
Double interlocking sliding door



Wall storage type



Both sides with door pockets



External (Sliding door)

